



# Service Bulletin

Bulletin No. 2005-13  
OEM No. 2005-10

Circulate to:  Sales Manager  Accounting  Service Manager  Technician  Parts Manager

## Choke Function - 14 Pin Key/Choke Harness

### Model Affected

Models Covered	Serial Number Or Year
Carbureted engines with standard Mercury 8 pin engine harness	2005 and prior

### Situation

#### Key/Choke Harness

The new 14 pin key/choke harness includes a key switch assembly which does **NOT** have a push to choke function or a dedicated choke wire in the harness.

Description	Part Number
14 Pin Key/Choke Harness	84-896537K__

#### Side Mount Control with 14 Pin Harness

The new side mount control has a push to choke style key switch but has no dedicated choke wire in the harness.

Description	Part Number
Side Mount Control	881170A__

### Correction

#### Key/Choke Harness

When using a new 14 pin key/choke harness and installing a 2005 model year and prior carbureted engine that requires a choke function, replace the key switch assembly with the key switch listed below.

Description	Part Number
14 Pin Key/Choke Harness	84-896537K__
Key Switch	87-88107T12

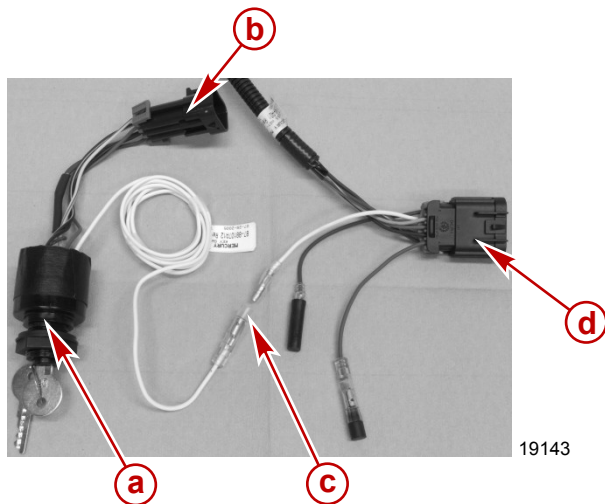
The 87-88107T12 switch uses the older style push for choke key assembly with the newer style 6 pin connector that will connect directly to the new key/choke harness assembly. Because the new key choke harness does not have a dedicated choke wire, an unused CAN 1 wire will be used for the choke circuit.

THE INFORMATION IN THIS DOCUMENT IS CONFIDENTIAL AND PROTECTED BY COPYRIGHT AND IS THE PROPERTY OF MERCURY MARINE.

This document is provided for the sole and exclusive use of the original recipient as prescribed by Mercury Marine and may not be distributed or copied, digitally or otherwise, without the prior written consent of Mercury Marine.

## Choke Function - 14 Pin Key/Choke Harness

The push to choke key assembly will come with an extended white wire that connects to the analog adapter harness.



- a - Key switch assembly - push to choke
- b - New style 6 pin connector (key switch)
- c - Female bullet terminal - connects to male bullet terminal on the analog adapter harness
- d - Analog adapter harness

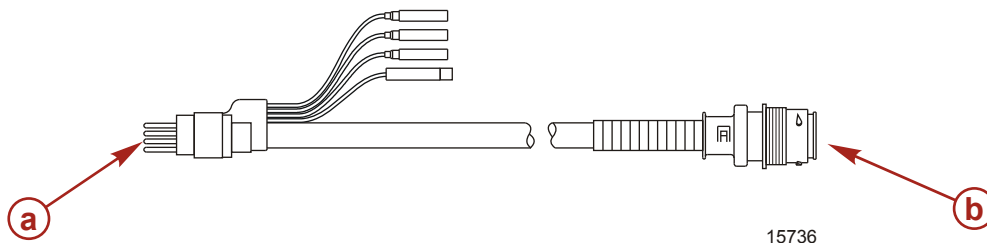
Description	Part Number
Key switch assembly - push to choke	87-88107T12
Analog adapter harness	84-892990T01

In most cases the analog adapter harness would be used when rigging a carbureted engine. The key switch white wire connects to a CAN 1 white wire. Because carbureted engines are not SmartCraft compatible, this wire can be used for the choke circuit in this situation.

The analog adapter harness connects to the main key/choke harness. The choke signal is sent through the main key/choke harness to the 14 pin connector terminal F.

**NOTE:** The analog adapter harness is **NOT** included with the key/choke harness. It must be ordered separately.

The 14 pin to 8 pin adapter harness is used to connect between the new style key/choke harness and 2005 model year and prior engines. The choke signal is sent through the adapter harness from terminal F at the 14 pin end to terminal 6 at the 8 pin end, which then connects to the engine enrichener or choke circuit.



### 14 Pin to 8 Pin Adapter Harness

- a - Engine end 8 pin
- b - Control harness end 14 pin

Part Number	Length
84-896539T01	30.48 cm (12 inches)
84-896539T05	152.4 cm (60 inches)
84-896539T08	243.84 cm (96 inches)

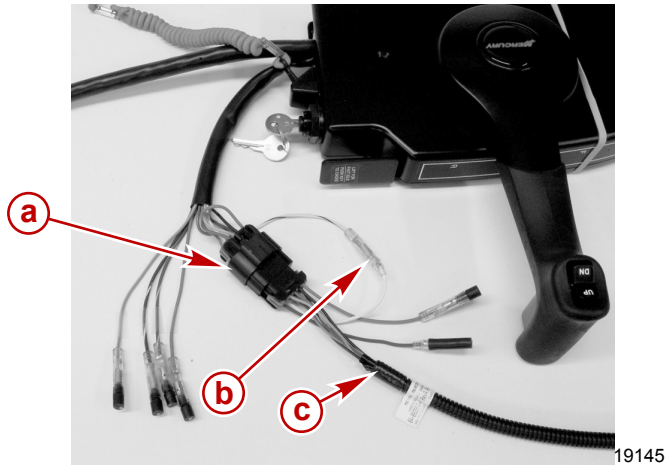
## Side Mount Control

When using a side mount control with the new 14 pin harness and installing a 2005 model year and prior carbureted engine that requires a choke function, an analog adapter harness will be required.

THE INFORMATION IN THIS DOCUMENT IS CONFIDENTIAL AND PROTECTED BY COPYRIGHT AND IS THE PROPERTY OF MERCURY MARINE.

This document is provided for the sole and exclusive use of the original recipient as prescribed by Mercury Marine and may not be distributed or copied, digitally or otherwise, without the prior written consent of Mercury Marine.

The side mount control has a 10 pin gauge connection for analog and SmartCraft gauges. There are 5 separate wires with bullet connectors that come off the side of this gauge connection. Connect the analog adapter harness to the 10 pin gauge connection on the control. Then connect the separate yellow/black wire from the control to the white unused CAN 1 wire in the analog adapter harness. Because carbureted engines are not SmartCraft compatible, this wire can be used for the choke circuit in this situation.



- a - Gauge connection (10 pin) from remote control
- b - Connection of yellow/black wire from control and unused CAN 1 white wire from analog adapter harness
- c - Analog adapter harness (84-892990T01)

**NOTE:** The analog adapter harness is **NOT** included with the side mount control. It must be ordered separately.

The 14 pin to 8 pin adapter harness is used to connect between the new style side mount control and 2005 model year and prior engines. The choke signal is sent through the adapter harness from terminal F at the 14 pin end to terminal 6 at the 8 pin end, which then connects to the engine enrichener or choke circuit.

**Parts required for key/choke harness:**

Qty.	Description	Part Number
1	Key switch assembly with push to choke	87-88107T12
1	Analog adapter harness	84-892990T01
1	14 pin to 8 pin adapter harness	84-896539T01/T05/T08

**Parts required for side mount control:**

Qty.	Description	Part Number
1	Analog adapter harness	84-892990T01
1	14 pin to 8 pin adapter harness	84-896539T01/T05/T08

**NOTE:** If the engine that required the choke function is later replaced with a newer engine that no longer requires the choke circuit, convert the control system back to its original state.

THE INFORMATION IN THIS DOCUMENT IS CONFIDENTIAL AND PROTECTED BY COPYRIGHT AND IS THE PROPERTY OF MERCURY MARINE.

This document is provided for the sole and exclusive use of the original recipient as prescribed by Mercury Marine and may not be distributed or copied, digitally or otherwise, without the prior written consent of Mercury Marine.