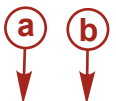


Circulate to: Sales Manager Accounting Service Manager Technician Parts Manager

Premium Throttle and Shift Cable With Partial or Missing Crimp Models Affected

| Models Covered | Serial Number |
|----------------|----------------------------------|
| Mercury | All models except DTS and Verado |
| Mariner | |
| Force | |
| MerCruiser | |
| Mercury Racing | |

All boats in OEM inventory or dealer inventory with a hull identification number (HIN) of A9-L9 or A0-B0 in the ninth and tenth position in conjunction with 09 or 10 in the eleventh and twelfth position may be affected.



US ABC45678A405 H2467 37412

a - Month and year of certification or manufacture
b - Model year

All premium throttle and shift cables identified with dates between January 1, 2009 (001 09) and January 14, 2010 (014 10) are affected. On the cables, dates appear with three digits representing the day of the year, followed by a space and a two-digit year. For example, a cable produced on February 25, 2009 will appear with a date code of 056 09 on the cable.

| Part Number | Part Description |
|---------------------|--------------------------------------|
| 896143A11-896143A13 | CABLE T/S STD 11-13 FT |
| 896143A15 | CABLE T/S STD 15 FT |
| 896145A08 | CABLE T/S STD 8 FT |
| 896145A10 | CABLE T/S STD 10 FT |
| 896145A15 | CABLE T/S STD 15 FT |
| 897977A06 | CABLE T/S G1 6 FT |
| 897977A08-897977A10 | CABLE T/S G1 8-10 FT |
| 897977A12-897977A16 | CABLE T/S G1 12-16 FT |
| 897977A18-897977A22 | CABLE T/S G1 18-22 FT |
| 897977A24 | CABLE T/S G1 24 FT |
| 897977A26 | CABLE T/S G1 26 FT |
| 897977A28 | CABLE T/S G1 28 FT |
| 897977B09-897977B14 | CABLE T/S 9 at 24-CABLE T/S 14 at 24 |

THE INFORMATION IN THIS DOCUMENT IS CONFIDENTIAL AND PROTECTED BY COPYRIGHT AND IS THE PROPERTY OF MERCURY MARINE.

This document is provided for the sole and exclusive use of the original recipient as prescribed by Mercury Marine and may not be distributed or copied, digitally or otherwise, without the prior written consent of Mercury Marine.

Premium Throttle and Shift Cable With Partial or Missing Crimp

| Part Number | Part Description |
|---------------------|---------------------------------------|
| 897978A06 | CABLE T/S G2 6 FT |
| 897978A09–897978A10 | CABLE T/S G2 9–10 FT |
| 897978A12–897978A28 | CABLE T/S G2 12–28 FT |
| 897978A30 | CABLE T/S G2 30 FT |
| 897978A36 | CABLE T/S G2 36 FT |
| 897978A38 | CABLE T/S G2 38 FT |
| 897978A40 | CABLE T/S G2 40 FT |
| 897978A50 | CABLE T/S G2 50 FT |
| 897978B10 | CABLE T/S 10 at 24 FT |
| 897978B12–897978B15 | CABLE T/S 12 at 24–CABLE T/S 15 at 24 |
| 897978B17 | CABLE T/S 17 at 24 |
| 897978B19–897978B20 | CABLE T/S 19 at 24–CABLE T/S 20 at 24 |
| 897978B22 | CABLE T/S 22 at 24 |
| 897978B24 | CABLE T/S 24 at 24 |
| 897979A04 | CABLE T/S SA 4 FT |
| 897979A10 | CABLE T/S SA 10 FT |
| 897979A13 | CABLE T/S SA 13 FT |
| 897979A16–897979A20 | CABLE T/S SA 16–20 FT |
| 897979A22–897979A24 | CABLE T/S SA 22–24 FT |
| 897979A27 | CABLE T/S SA 27 FT |
| 897979A32 | CABLE T/S SA 32 FT |
| 897979A34 | CABLE T/S SA 34 FT |
| 897979A60 | CABLE T/S SA 60 FT |
| 8M0032438 | CABLE T/S G2 TLR |

Situation

The throttle and shift cables are separating at any one of multiple crimp locations because the ferrule was not properly crimped to the conduit on one or both ends of the cable or on the input end (remote control box end) to the core wire. All suspect cables that have failed have done so during installation or upon first predelivery inspection (PDI).

Cable Inspection

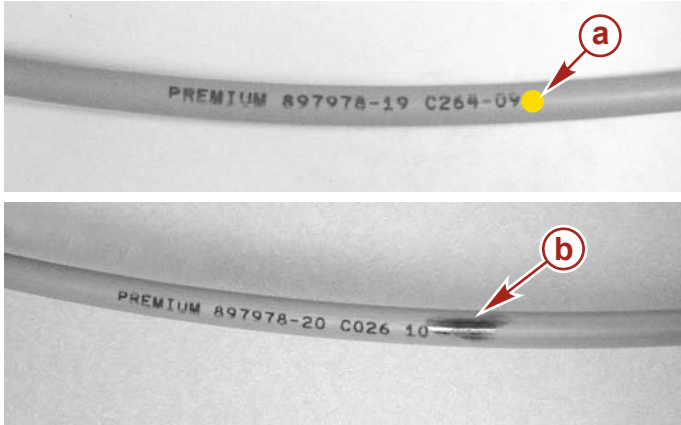
Inspect all cables in OEM or dealer stock for the date codes between January 1, 2009 (001 09) and January 14, 2010 (014 10) for a yellow or brown dot next to the date code. The box date may not correspond exactly to the production date of the cable. Inspect all cables installed in boats with boat HIN of date codes A9–L9 or A0–B0 for cable date codes between January 1, 2009 and January 14, 2010. Cables with date codes of 2008 and prior are not affected by this issue/bulletin and do not need to be replaced and/or returned.

For all cables 876143Axx, 897977Axx, and 897978Axx listed in the table: If the date code appears at the remote-control end of the cable and not at the engine connection end as specified, then the cable is in the suspect date code range and must be changed.

THE INFORMATION IN THIS DOCUMENT IS CONFIDENTIAL AND PROTECTED BY COPYRIGHT AND IS THE PROPERTY OF MERCURY MARINE.

This document is provided for the sole and exclusive use of the original recipient as prescribed by Mercury Marine and may not be distributed or copied, digitally or otherwise, without the prior written consent of Mercury Marine.

For 879979Axx series cables listed in the table: The date code can be at either end of the cable. Inspect to determine whether the cable is in the affected date code range and does not have a yellow or brown dot.



- a - Yellow dot
- b - Brown dot

43508

Correction

If a suspect cable is found in dealer or OEM stock, return the cable to Mercury Marine. If a cable with the suspect date code is found in a boat and no yellow or brown dot appears on the cable, remove and replace the cables according to the boat manufacturer's recommendations.

When servicing the cable, follow documented servicing procedures for reassembly, using applications of grease, Loctite, and proper torques.

Repeat the predelivery inspection on the boat and engine.

Identifying a Repaired Cable

Factory identification of a reworked cable is noted by a yellow or brown dot next to the part number on the outside of the box.



- a - Yellow or brown dot

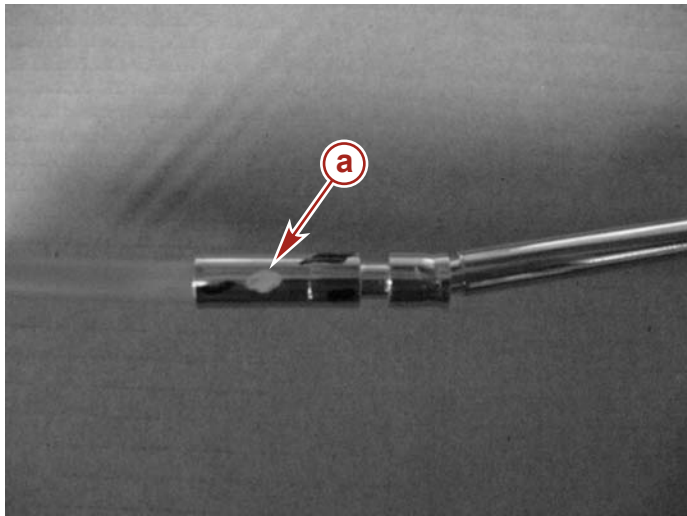
43510

THE INFORMATION IN THIS DOCUMENT IS CONFIDENTIAL AND PROTECTED BY COPYRIGHT AND IS THE PROPERTY OF MERCURY MARINE.

This document is provided for the sole and exclusive use of the original recipient as prescribed by Mercury Marine and may not be distributed or copied, digitally or otherwise, without the prior written consent of Mercury Marine.

Premium Throttle and Shift Cable With Partial or Missing Crimp

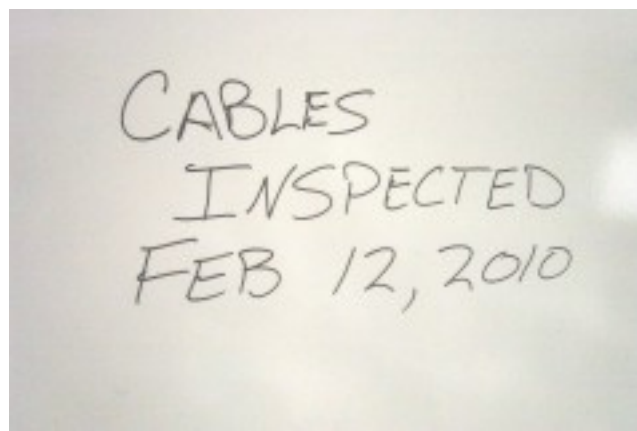
Also, the cable may have a yellow dot on the ferrule or by the date code.



a - Yellow dot

43511

To help identify a boat that had this work performed, the dealer or OEM may have placed a handwritten notation, "Cables OK," next to the boat HIN. These boats must still be inspected, as boats may have been incorrectly labeled as "Cables OK." Follow the inspection procedures above in **Cable Inspection**. After cable inspection or replacement, place a hand-written notation, "Cables Inspected" and the date of the inspection. For example: CABLES INSPECTED Feb 12, 2010.



43513

Left: a previously inspected boat that needs to be inspected again. Right: notation on a boat that has been inspected under this bulletin's fix program.

OEM and Dealer Parts Inventory, OEM and Dealer-Rigged Boat Inventory

Customers in the United States: To return any premium throttle and shift cables with date codes between January 1, 2009 (001 09) and January 14, 2010 (014 10) in your inventory, use MercNET to create a claim or call Mercury Technical Service for a preauthorized claim. If Technical Service creates the preauthorized claim, it will be put into parts hold. Cables with date codes of 2008 and prior are not affected by this issue/bulletin and do not need to be replaced and/or returned. Using MercNET, print a copy of the claim and include it with the return. The claim will be credited on Mercury Marine's receipt of the cables.

Customers outside the United States: Return any premium throttle and shift cables with date codes between January 1, 2009 and January 14, 2010 in your inventory to the appropriate distribution center for credit. Cables with date codes of 2008 and prior are not affected by this issue/bulletin and do not need to be replaced and/or returned. Follow the normal warranty parts procedure.

Warranty

If only the inspection of the cable in the boat was necessary, complete the warranty claim, listing:

- Boat HIN

THE INFORMATION IN THIS DOCUMENT IS CONFIDENTIAL AND PROTECTED BY COPYRIGHT AND IS THE PROPERTY OF MERCURY MARINE.

This document is provided for the sole and exclusive use of the original recipient as prescribed by Mercury Marine and may not be distributed or copied, digitally or otherwise, without the prior written consent of Mercury Marine.

- Engine serial number; if no engine is available use a Quicksilver claim
- Labor: 0.5 hour
- Warranty flat rate code: SB05
- Part code: 221
- Failure code: 00
- **Cable date codes**

If the inspection and cable replacement were required, complete the warranty claim, listing:

- Boat HIN
- Engine serial number; if no engine is available use a Quicksilver claim
- Labor: 1.5
- Warranty flat rate code: SB10 and SB05
- Part code: 221
- Failure code: 00
- **Cable date codes**

Follow the normal procedure for returning the part

Outside the United States: hold parts for inspection by a Marine Power International technical representative.

THE INFORMATION IN THIS DOCUMENT IS CONFIDENTIAL AND PROTECTED BY COPYRIGHT AND IS THE PROPERTY OF MERCURY MARINE.

This document is provided for the sole and exclusive use of the original recipient as prescribed by Mercury Marine and may not be distributed or copied, digitally or otherwise, without the prior written consent of Mercury Marine.