

Circulate to:     Sales Manager     Accounting     Service Manager     Technician     Parts Manager

## 3 Ram Power Trim Motor Water Leak

### Models Affected

Models Covered	Serial Number
Mercury/Mariner 135–200 OptiMax	1B804695–1B807280

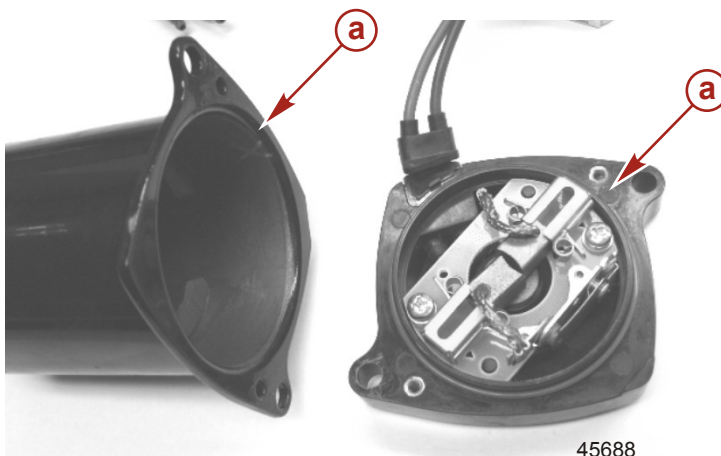
### Scope

Worldwide

### Situation

Mercury Marine has determined the seal on some power trim motors may allow water to enter the power trim system which can damage the motor and other internal components of the power trim system. Mercury Marine has identified the cause of this condition and has made appropriate changes to new power trim systems produced.

The performance of these affected units will gradually degrade, become sluggish, and will eventually cease to operate.



**a** - Seal located on motor base has a potential to leak due to an incorrect radius on the motor housing flange

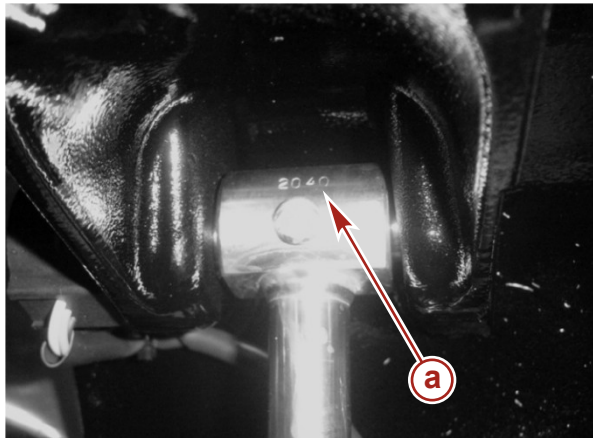
45688

THE INFORMATION IN THIS DOCUMENT IS CONFIDENTIAL AND PROTECTED BY COPYRIGHT AND IS THE PROPERTY OF MERCURY MARINE.

This document is provided for the sole and exclusive use of the original recipient as prescribed by Mercury Marine and may not be distributed or copied, digitally or otherwise, without the prior written consent of Mercury Marine.

## Inspection

Trim the engine completely up and engage the tilt lock lever. Look for the date code on the trim system located on the top of the ram eyelet just above the retaining pin.



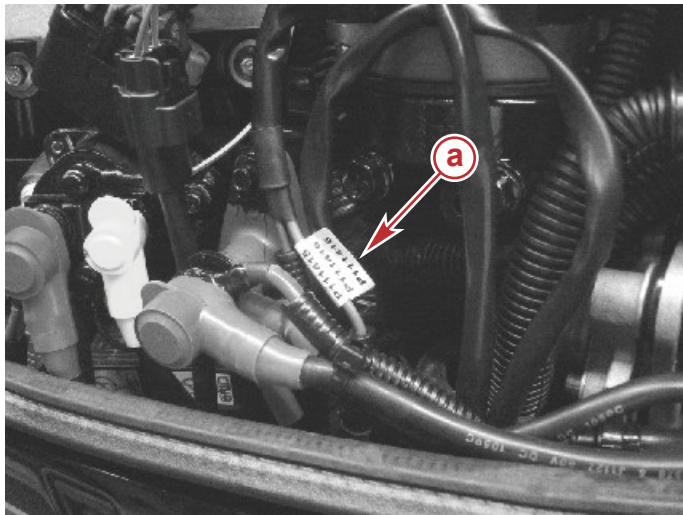
45689

**a** - The date code of 2040 is shown

## Correction

The trim motor date code is located at the end of the motor leads under the cowl in the general area of the hot stud. Suspect power trim systems are within date codes 1370 –1730.

If the power trim is in the date code range, inspect the power trim motor assembly date code. The trim motor date code must be in the ranges of **P101117 through P101613** for trim motor replacement.



48399

**a** - Date code location

## Owner Notification

A letter has been sent to the affected customers informing them of this issue. They may perform the date code inspection themselves or bring the engine to an authorized dealer.

## Dealer Parts Inventory or Dealer Outboard Inventory

All defective parts have been accounted for and all parts in Mercury Service stock are certified.

If you have an engine in the affected serial number range, refer to the inspection section preceding.

## Parts Required

Qty.	Description	Part Number
1	Power trim motor assembly	8M0031551

THE INFORMATION IN THIS DOCUMENT IS CONFIDENTIAL AND PROTECTED BY COPYRIGHT AND IS THE PROPERTY OF MERCURY MARINE.

This document is provided for the sole and exclusive use of the original recipient as prescribed by Mercury Marine and may not be distributed or copied, digitally or otherwise, without the prior written consent of Mercury Marine.

## Warranty

Complete warranty:

- Labor: 0.5 hour for inspection only
- Flat rate labor code: SB05
- Labor: 1 hour to inspect and Remove and Replace power trim motor assembly
- Flat rate labor code: SB10

## US and Canada

Complete and process the claim via MercNET or return a warranty claim form.

Internal use only:

- Part code: 110
- Failure code: 00

## International

Hold parts for inspection/disposal by a Marine Power International technical representative.

## Bulletin Expiration

January 1, 2016

THE INFORMATION IN THIS DOCUMENT IS CONFIDENTIAL AND PROTECTED BY COPYRIGHT AND IS THE PROPERTY OF MERCURY MARINE.

This document is provided for the sole and exclusive use of the original recipient as prescribed by Mercury Marine and may not be distributed or copied, digitally or otherwise, without the prior written consent of Mercury Marine.

Dear Mercury Outboard Owner

Thank you for your purchase of a Mercury Outboard engine. Mercury Marine is dedicated to providing superior product reliability and customer satisfaction. As part of our commitment to superior customer satisfaction, we have determined that your power trim motor may have a condition where the water seal may be compromised.

**What is the condition?**

Mercury Marine has determined that the seal for the power trim motor may allow water to enter the power trim system and damage the motor and other internal components of the power trim system. Mercury Marine has identified the cause of this condition and made the appropriate changes to new power trim systems produced.

**What will Mercury Marine do?**

Our dealers will perform an inspection of your power trim system to see if the unit is in the suspect range. Mercury Marine has provided instructions to our dealers on the proper method of replacing the power trim motor and seal if required.

**What should you do?**

You may inspect your own system by trimming the engine completely into the up position, locking the tilt lock lever, and looking for the date code on the trim system. The date code is located at the top of the ram on the eyelet just above the retaining pin. Suspect power trim systems are within date codes 1370–1730.

Please see the attached document for inspection procedure.

If your power trim system is within this date code range, please contact your Mercury dealer to schedule an appointment for replacing the power trim motor and seal.

If you are not comfortable with the above inspection procedure, please contact your Mercury Outboard dealer and mention Service Bulletin 2010-11 to schedule an appointment to have this inspection performed on your outboard. Your dealer will be able to determine how long this inspection/correction will take.

**Please present this notice to your dealer when you bring your boat in for your service appointment.**

**What if you have other questions or if you no longer own this engine?**

Please contact your Mercury Outboard dealer or call Mercury Outboard Customer Service at 1-920-929-5040 between 7:30 AM and 5:30 PM CST.

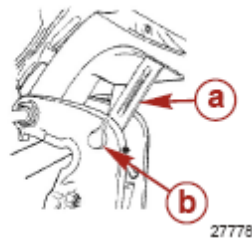
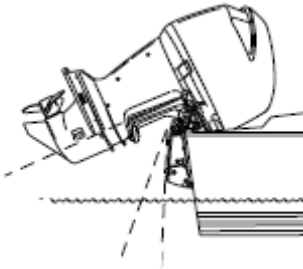
We have sent this notice in the interest of your continued satisfaction with our product and we sincerely regret any inconvenience this may cause you.

Thank you for boating with Mercury Marine.

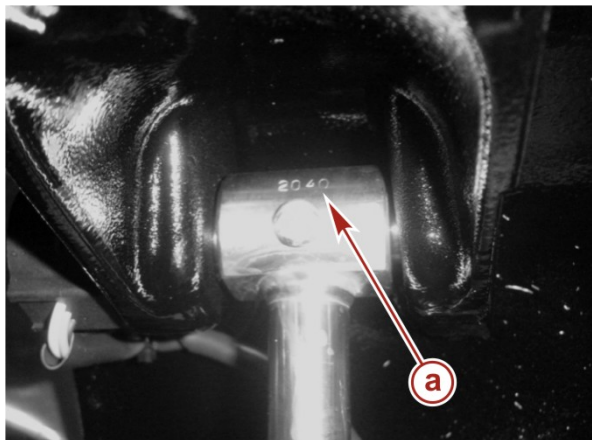
Mercury Marine Service

Trim the engine completely into the up position, locking the tilt lock lever. Look for the date code on the trim system. The date code is located at the top of the ram on the eyelet just above the retaining pin.

Please see illustrations below.



**a** - Tilt support lever  
**b** - Knob



a – The date code of 2040 is shown

In the above photo you can see the date code of 2040.

Suspect power trim systems are within date codes 1370–1730.