



STERN DRIVES/INBOARD ENGINES

service bulletin

NUMBER: 79-5

DATE: 1/9/79

- A. MerCruiser V-8 Power Steering Link Rod Installation Location
- B. Power Trim Fuse/Circuit Breaker Part Numbers
- C. Stainless Steel Covered Hydraulic Hoses C-32-86036

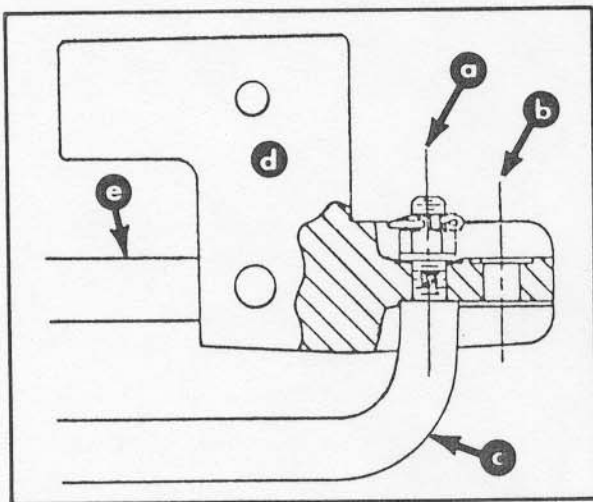
CIRCULATE TO:
 SERVICE MANAGER
 PARTS MANAGER
 MECHANICS

A. MERCRUISER V-8 POWER STEERING LINK ROD INSTALLATION LOCATION

(Attach Bulletin Reference Sticker to P. 7B-9 of Your Service Manual.)

The steering link rod, that connects the steering arm to the Power Steering cable end adaptor, must be placed in hole "A". (Figure 1) Hole "B" is for the tie bar connection that is used in dual drive installations.

Failure to install link rod in correct position may result in damage to the steering system.



- a - Steering Link Rod Installation Hole
- b - Tie Bar Installation Hole
- c - Steering Link Rod
- d - Power Steering Cable End Adaptor
- e - Power Steering Extension Shaft

Figure 1. Steering Link Rod Installed on Power Steering Cable End Adaptor

B. POWER TRIM FUSE/CIRCUIT BREAKER PART NUMBERS

(Attach Bulletin Reference Sticker to P. 7A-1 of Your Service Manual.)

Following are the part numbers of fuses and circuit breakers which are currently used on the MerCruiser Power Trim electrical system:

Part No.	Description
C-88-79023A90	90 amp fuse (pump mounted)
C-88-79091	20 amp fuse (in line at panel)
C-88-79137	40 amp circuit breaker (pump mounted)
C-88-79149	20 amp circuit breaker (pump mounted; used in place of 40 amp circuit breaker when trim buttons are located in shift control handle)

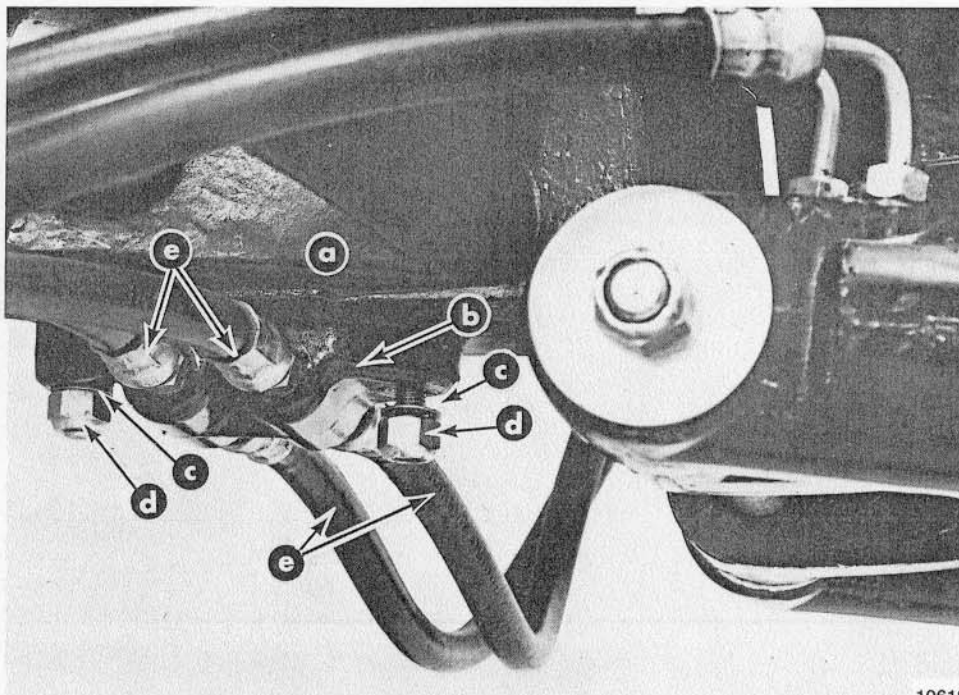
(OVER)

C. STAINLESS STEEL COVERED HYDRAULIC HOSES C-32-86036

(Attach Bulletin Reference Sticker to P. 7A-3 of Your Service Manual.)

Whenever installing the new stainless steel covered hydraulic hose (located between trim cylinders and gimbal housing) as a replacement item, make sure that (2) lockwashers (C-13-78968) also are installed. Washers are positioned between hydraulic connector (located on bottom of gimbal housing) and its retaining nuts. (Figure 2)

When installed, the internal lockwasher will penetrate the painted surface of the hydraulic connector and provide positive electrical continuity between the 2 mounting studs, the hydraulic connector, the hydraulic lines, which are connected to the hydraulic connector, and the aft end of the trim cylinders.



10618

- | | |
|-----------------------------|-------------------------|
| a - Gimbal Housing | d - Nuts (2) |
| b - Hydraulic Connector | e - Hydraulic Hoses (4) |
| c - Internal Lockwasher (2) | |

Figure 2. Lockwasher Position