

TO: SERVICE MANAGER MECHANICS
PARTS MANAGER

No. 86-1

- A. Backfitting New Design V-6 & V-8 Partial Engines
B. New MerCruiser Parts Manual

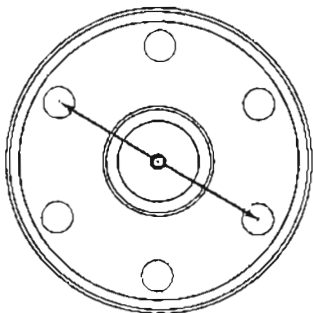
A. BACKFITTING NEW DESIGN V-6 & V-8 PARTIAL ENGINES

The following partial engines have been superseded.

PARTIAL ENGINE		SUPERSEDED TO	
Displacement	Model	Assembly No.	Engine Code
262 CID	185	13409A1	KW
262 CID	205	13410A1	KR
305 CID	898/200	13412A1	PY
305 CID	228/230	13412A1	PZ
350 CID	255/260	13415A1	AB

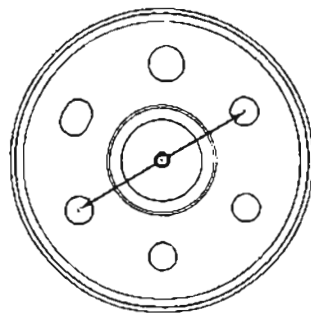
General Motors has changed the V-6 and V-8 cylinder block and crankshaft to incorporate a one-piece, full-circle rear seal. For this change to be made, General Motors had to redesign the cylinder block and crankshaft. All partial engines shipped from Quicksilver will be of the new design because General Motors has made the early style engines N.L.A.

Figure 1 shows the old style crankshaft stud pattern. Figure 2 shows the new style crankshaft stud pattern. New style cylinder blocks also have an aluminum carrier attached to the rear seal area for seal retention.



a - 3-5/8" (92mm)

Figure 1.



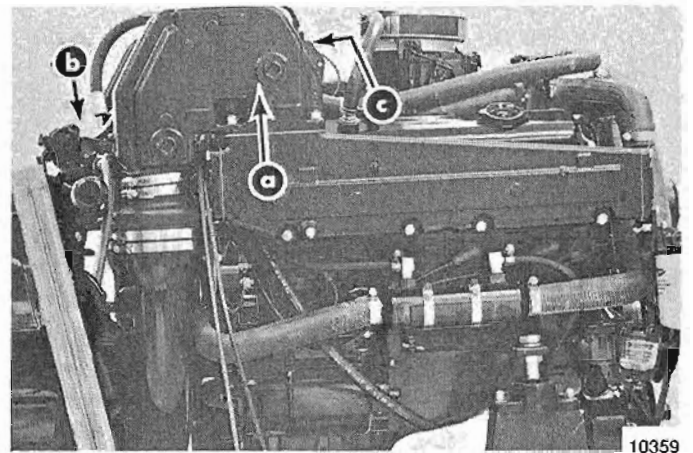
a - 3" (76mm)

Figure 2.

Because of this change, follow 1 or 2 to backfit the new style partial engine.

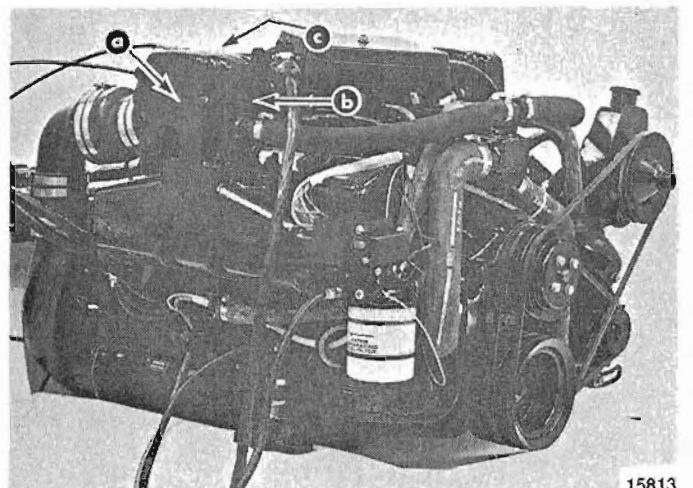
1. If original engine is a MerCruiser pre-redesign (Figure 3) or redesign, (Figure 4) model having a 12-3/4" (324mm) diameter flywheel (Figure 5):

- A. Order one engine coupler assembly, part number 14505A2.
- B. If original starter motor has a Delco number 1998513 or 1109482, order one starter housing, part number 75666. If original starter motor has a Delco number 1998568 or 1998566, order one starter housing, part number 13754.
- C. Order one starter brace, part number 12404 and one bolt, part number 10-94435.
- D. Modify original flywheel dust cover slightly so it will fit. Locate dust cover in place and mark locations (on cover) that have to be removed.



a - Exhaust Elbow Mounted on Aft End of Manifold
b - Shift Plate At Back of Engine
c - Standard Ignition System

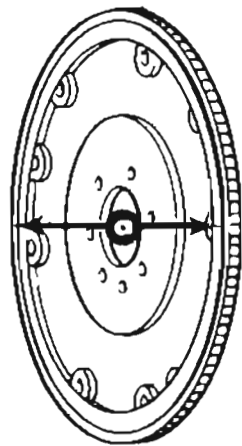
Figure 3.



a - Exhaust Elbow Mounted in Center of Manifold
b - Shift Plate On Side of Exhaust Elbow
c - High Energy Ignition System

Figure 4.

2. If original engine is a MerCruiser redesign model (Figure 4), having a 14" (356mm) diameter flywheel (Figure 5):
 - a. Order one engine coupler assembly, part number 14505A2.
 - b. Modify original flywheel dust cover slightly so it will fit. Locate dust cover in place and mark locations (on cover) that have to be removed.



a - Measure Here (Ends of Ring Gear Teeth)

Figure 5.

B. NEW MERCUISER PARTS MANUAL

Due to the increasing size of volume #2 of the MerCruiser paper parts manual, a new volume #3 has been created. Volume #3 will include MerCruiser engines, stern drives, and Hi-Performance products starting with 1983 through present products. The following part numbers should be used when ordering MerCruiser paper parts manuals.

Volume #1 - 1962 thru 1969 models with a hard cover	90-69975
Volume #1 - 1962 thru 1969 models, inserts only	90-69976
Volume #2 - 1970 thru 1982 models with a hard cover	90-69980
Volume #2 - 1970 thru 1982 models, inserts only	90-69981
Volume #3 - 1983 thru present with a hard cover	90-14615
Volume #3 - 1983 thru present, inserts only	90-14620