



# PARTS CATALOG

## III STERN DRIVE

### SERIAL NUMBER

III 1968-1972 ..... 2373127 THRU 3002613

# TABLE OF CONTENTS:

DRIVE SHAFT HOUSING ASSEMBLY AND GEAR ASSEMBLY .....	10
GEAR HOUSING ASSEMBLY, COMPLETE .....	14
GIMBAL HOUSING AND BELL HOUSING .....	6
GIMBAL RING AND STEERING LEVER .....	4
HYDRAULIC PUMP AND TRIM CONTROL PANEL .....	18
HYDRAULIC PUMP AND TRIM INDICATOR CONTROL PANEL .....	22
HYDRAULIC PUMP ASSEMBLY, COMPLETE .....	26
PARTS INDEX .....	30
TRANSOM PLATE .....	2
TRIM CYLINDER AND HYRAULIC HOSES .....	28

**NOTE:** *Indented description indicate that these parts are included in preceeding assembly.*

**AR** = As Required

**NSS** = Not Sold Separate

**OPT** = Optional

**NS** = Not Shown

**THESE PARTS BOOKS/FICHE CARD ARE COPYRIGHTED AND MAY NOT BE DISTRIBUTED OR REPRODUCED IN ANY OTHER FORMAT BY ANYONE OTHER THAN MERCURY MARINE WITHOUT THE PRIOR WRITTEN CONSENT OF MERCURY MARINE.**

# **REPLACEMENT PARTS ! WARNING !**

Electrical, ignition and fuel system components on MerCruiser Engines and Stern Drives are designed and manufactured to comply with U.S. Coast Guard Rules and Regulations to minimize risks of fire or explosion. Use of replacement electrical, ignition or fuel system components, which do not comply to these rules and regulations, could result in a fire or explosion hazard and should be voided.

When servicing the electrical, ignition and fuel systems, it is extremely important that all components are properly installed and tightened. If not, any electrical or ignition component opening would permit sparks to ignite fuel vapors from fuel system leaks, if they existed.

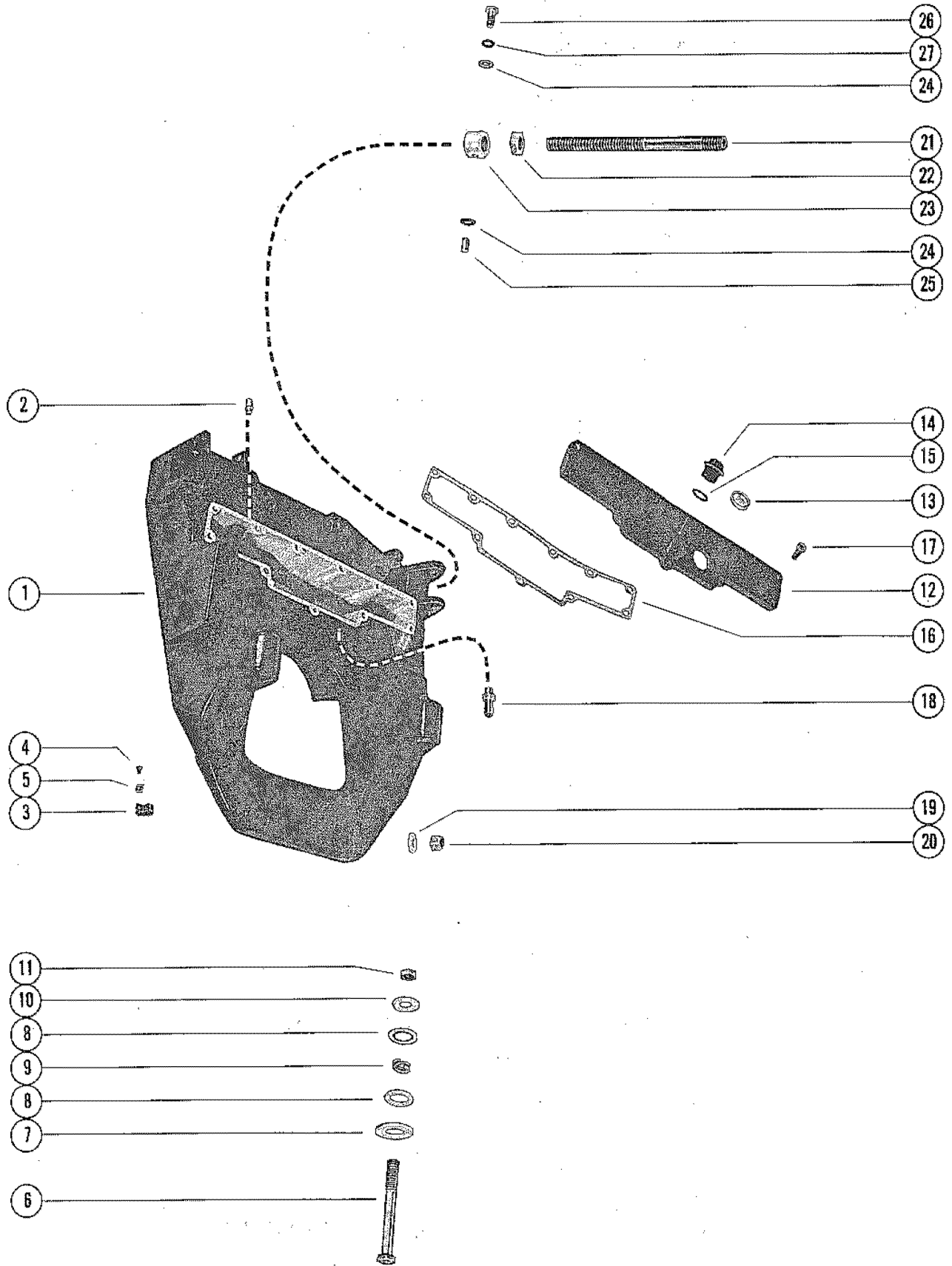
## **ENGINE MECHANICAL COMPONENTS**

Many of the engine mechanical components are designed for marine applications. Unlike automotive engines, marine engines are subjected to extended periods of heavy load and wide- open-throttle operation, therefore, require heavy-duty components. Special marine engine parts have design and manufacturing specifications, which are required to provide long life and dependable performance. Marine engine parts also must be able to resist the corrosive action of salt or brackish water that will rust or corrode standard automotive parts within a short period of time.

Failure to use recommended Mercury Precision Parts OR Quicksilver service replacement parts can result in poor engine performance and/or durability, rapid corrosion of parts subjected to salt water and possibly complete failure of the engine.

Use of parts other than recommended service replacement parts will void the warranty on those parts which are damaged as a result of the use of other than recommended parts.

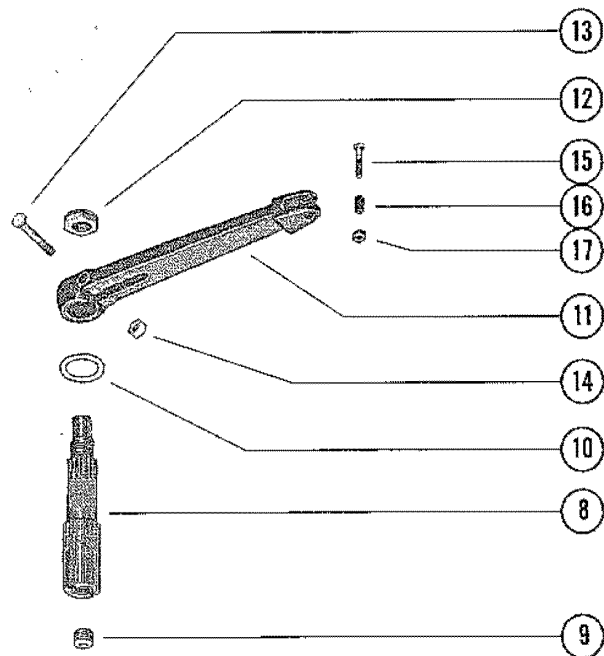
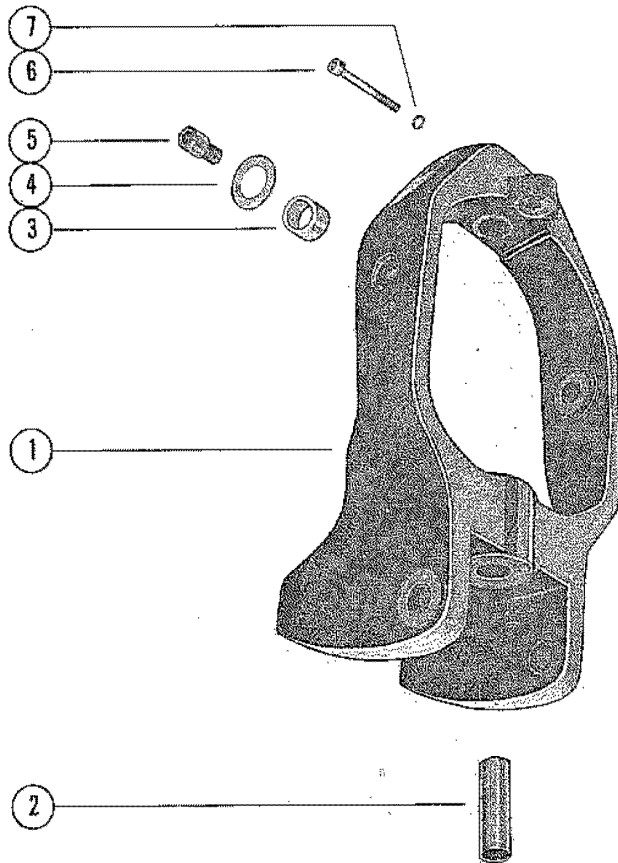
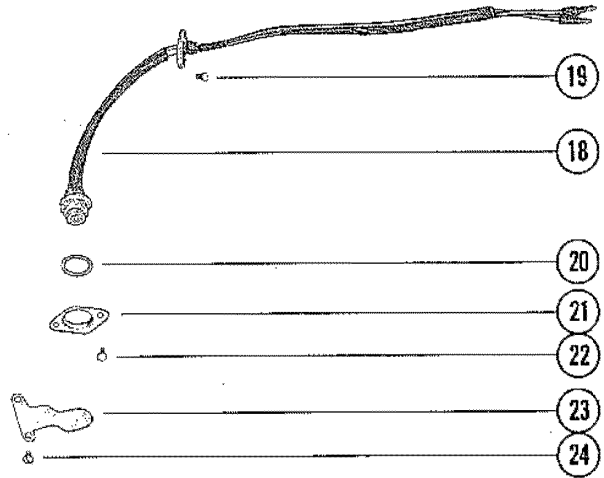
# TRANSOM PLATE



# TRANSOM PLATE

REF. NO.	PART NO.	SYM.	QTY.	DESCRIPTION
1	46986		1	PLATE, TRANSOM (POWER TRIM)
	55498		1	PLATE, TRANSOM (POWER TRIM WITH INDICATOR)
2	22-47902		1	VENT, OIL RESERVIOR COVER
3	54-26550		3	CLIP, WIRING HARNESS TO TRANSOM PLATE (5/16)
4	10-30663		3	SCREW, WIRING HARNESS CLIP TO TRANSOM PLATE (3/8")
3	22789		3	"D" WASHER, WIRING HARNESS CLIP SCREW
6	10-47467		2	SCREW, TRANSOM PLATE TO TRANSMISSION MOUNTING BRACKET (51/2"
7	12-47475		2	WASHER, TRANSOM PLATE SCREW (1 1/8" I.D.)
8	12-47466		4	WASHER, FIBER - TRANSOM PLATE SCREW
9	13-34846		2	LOCKWASHER, TRANSOM PLATE SCREW (DOUBLE WIND)
10	12-33171		2	WASHER, TRANSOM PLATE SCREW (41/64" I.D.)
11	11-22339		2	NUT, TRANSOM PLATE SCREW
12	47337A1		1	COVER ASSEMBLY, OIL RESERVIOR - TRAMSOM PLATE
13	48992		1	INDICATOR, OIL LEVEL
14	22-32018		1	PLUG, OIL FILLER - OIL RESERVIOR COVER
15	25-35126		1	"O" RING, OIL FILLER PLUG
16	27-47534		1	GASKET, OIL RESERVIOR COVER
17	10-32565		11	SCREW, OIL RESERVIOR COVER TO TRANSOM PLATE "1")
18	22-47841		1	CONNECTOR, TRANSOM PLATE (OIL HOSE)
19	12-34876		8	WASHER, BELL HOUSING TO TRANSOM PLATE SCREW AND STUD
2	11-35000		8	NUT, BELL HOUSING TO TRANSOM PLATE SCREW AND STUD
21	32-47439		1	TUBE, CABLE GUIDE
22	11-37984		1	NUT, JAM - CABLE GUIDE TUBE
23	35221		1	RING, SWIVEL - CBLE GUIDE TUBE
24	12-47533		2	WASHER, SWIVEL RING PIVOT BOLT
25	17-47621		1	PIN, SWIVEL RING TO TRANSOM PLATE <b>EARLY MODELS</b>
26	10-31832		1	BOLT, PIVOT - SWIVEL RING TO TRANSOM PLATE <b>LATE MODELS USE QUANTITY OF TWO</b>
27	13-31848		1	LOCKWASHER, SWIVEL RING PIVOT BOLT <b>LATE MODELS USE QUANTITY OF TWO</b>
	37-39395		1	DECAL, SERIAL NUMBER

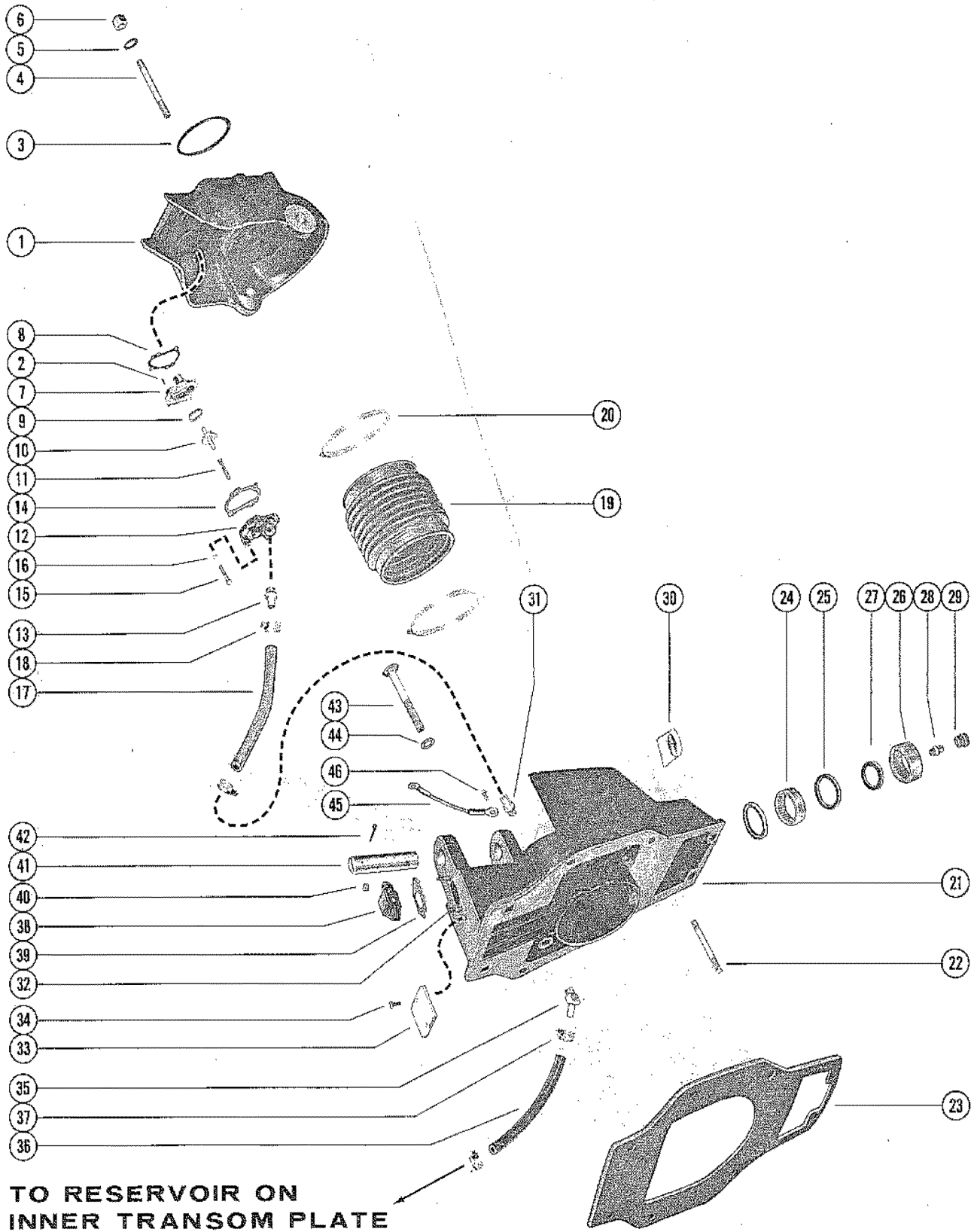
# GIMBAL RING AND STEERING LEVER



## GIMBAL RING AND STEERING LEVER

REF. NO.	PART NO.	SYM.	QTY.	DESCRIPTION
1	47350A2		1	GIMBAL RING ASSEMBLY
2	23-47378		1	BUSHING, GIMBAL RING (SWIVEL PIN)
3	23-48311		2	BUSHING, GIMBAL RING (HINGE PIN)
4	12-48313		2	WASHER, ANTI-GALLING - BELL HOUSING (HINGE PIN)
5	17-48312		2	PIN, HINGE - GIMBAL RING TO GIMBAL HOUSING
6	10-47450		1	SCREW, UPPER SWIVEL SHAFT RETAINING - GIMBAL RING (4")
7	12-47538		1	WASHER, UPPER SWIVEL SHAFT RETAINING SCREW
8	47645		1	SHAFT, UPPER SWIVEL - GIMBAL RING TO GIMBAL HOUSING
9	22-47540		1	PLUG, PIPE - UPPER SWIVEL SHAFT
2	12-34858		2	WASHER, UPPER SWIVEL SHAFT
11	47367		1	LEVER, STEERING - UPPER SWIVEL SHAFT
12	11-30499		1	NUT, STEERING LEVER TO UPPER SWIVEL SHAFT
13	10-54193		1	SCREW, STEERING LEVER TO UPPER SWIVEL SHAFT (2 1/2")
14	11-23161		1	NUT, STEERING LEVER SCREW
15	10-24644		1	SCREW, STEERING CABLE TO STEERING AREM (1 3/8")
16	23-47643		1	SPACER, STEERING CALBE SCREW
17	11-20361		1	NUT, STEERING CABLE SCREW
18	47438A1		1	TILT STOP SWITCH ASSEMBLY, GIMBAL RING
19	10-20367		2	SCREW, TILT STOP SWITCH COVER ATTACHING (7/16")
20	23-31902		1	SPACER, TILT STOP SWITCH
21	31899		1	PLATE, RETAINER - TILT STOP SWITCH TO GIMBAL RING
22	10-20055		2	SCREW, RETAINER PLATE TO GIMBAL RING (3/8")
23	49343		1	LEVER, ACTUATING - TILT STOP SWITCH
24	10-31903		2	SCREW, ACTUATING LEVER TO GIMBAL RING (3/8")

# GIMBAL HOUSING AND BELL HOUSING



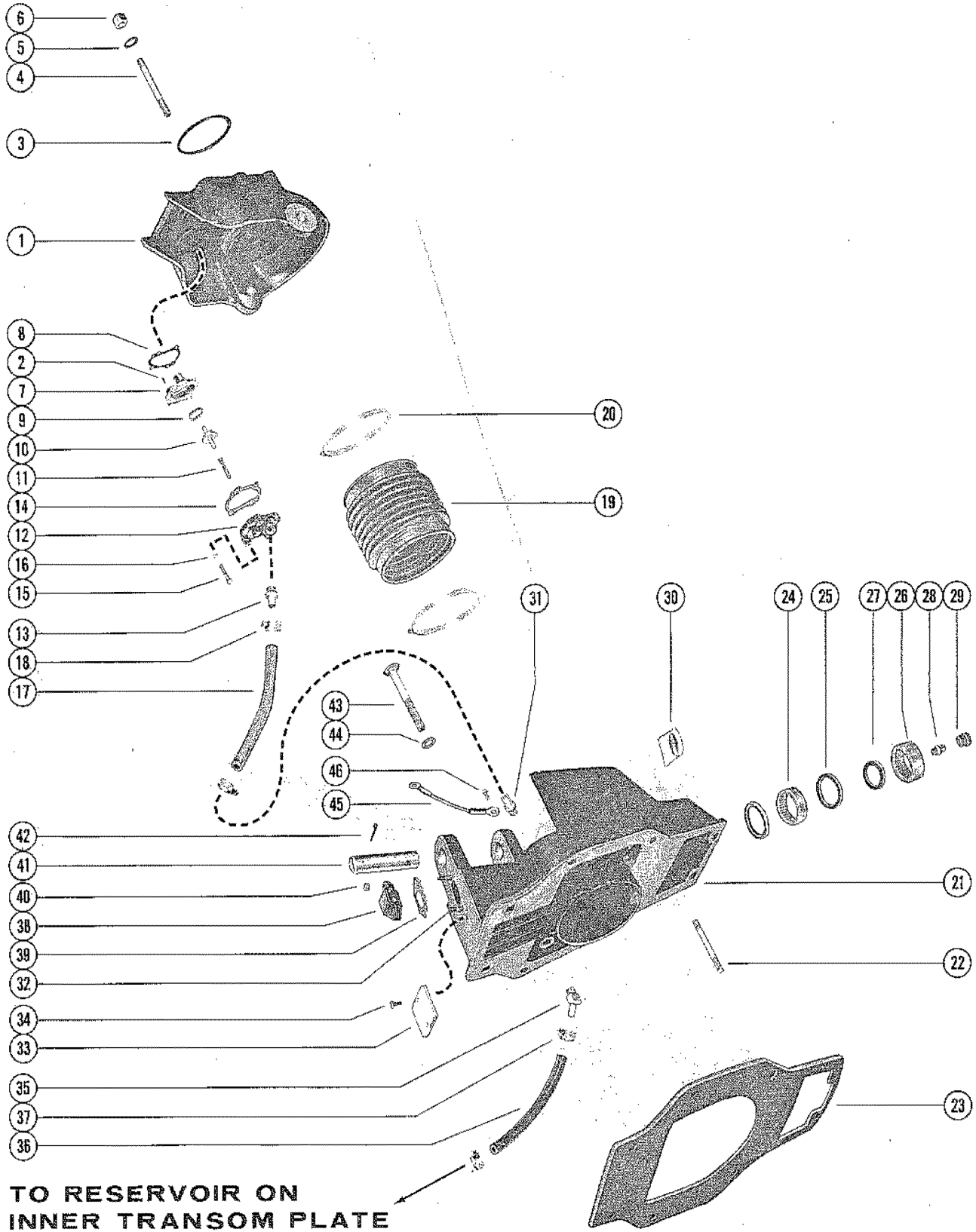


# GIMBAL HOUSING AND BELL HOUSING

REF. NO.	PART NO.	SYM.	QTY.	DESCRIPTION
1	46972A1		1	BELL HOUSING ASSEMBLY
2	17-48450		2	PIN, DOWEL - BELL HOUSING
3	25-48451		1	"O" RING, BELL HOUSING
4	16-57987		6	STUD, BELL HOUSING TO DRIVE SHAFT HOUSING (4 5/16")
5	12-47428		6	WASHER, BELL HOUSING TO DRIVE SHAFT HOUSING STUD
6	11-47379		6	NUT, BELL HOUSING TO DRIVE SHAFT HOUSING STUD
7	48124		1	GUIDE, CHECK VALVE - BELL HOUSING
8	27-48363		1	GASKET, CHECK VALVE GUIDE
9	25-48452		1	QUAD RING, OIL RELEASE CHECK VALVE
10	20-48219		1	CHECK VALVE, OIL RELEASE
11	24-48442		1	SPRING, TENSION - OIL RELEASE CHECK VALVE
12	48163A1		1	COVER ASSEMBLY, CHECK VALVE GUIDE
13	22-47841		1	CONNECTOR, CHECK VALVE GUIDE COVER
14	27-48363		1	GASKET, CHECK VALVE GUIDE COVER
15	10-36154		4	SCREW, CHECK VALVE GUIDE COVER TO BELL HOUSING (1 3/8")
16	13-26992		4	LOCKWASHER, CHECK VALVE GUIDE COVER SCREW
17	32-48458		1	HOSE, OIL - BELL HOUSING TO GIMBAL HOUSING (10")
18	54-32523		2	CLAMP, OIL HOSE TO BELL HOUSING AND GIMBAL HOUSING
19	47370A1		1	BELLOWS, ASSEMBLY, UNIVERSAL JOINT
20	54-59381		2	CLAMP, BELLOWS TO GIMBAL HOUSING AND BELL HOUSING
21	46973A1		1	GIMBAL HOUSING ASSEMBLY
22	16-57988		6	STUD GIMBAL HOUSING TO TRANSOM PLATE (5 3/8")
23	27-47366		1	GASKET, GIMBAL HOUSING TO TRANSOM
24	31-30457		1	BEARING, ROLLER - ROLLER HOUSING (LOWER)
25	26-31851		2	OIL SEAL, LOWER GIMBAL HOUSING ROLLER BEARING
26	31-21638		1	BEARING, ROLLER - GIMBAL HOUSING (UPPER)
27	26-35025		1	OIL SEAL, UPPER GIMBAL HOUSING ROLLER BEARING
28	22-31345		1	FITTING, GREASE - GIMBAL HOUSING
29	29359		1	LUBRICAP, GIMBAL HOUSING GREASE FITTING
30	56038		1	EMBLEM, GIMBAL HOUSING
31	22-47841		1	CONNECTOR, GIMBAL HOUSING (OIL HOSE)
32	16-56766		2	STUD, GIMBAL HOUSING TO HYDRAULIC CONNECTOR (1 3/8")
33	34762A1		1	PLATE ASSEMBLY, INHIBITOR - GIMBAL HOUSING
34	10-34763		2	SCREW, INHIBITOR PLATE TO GIMBAL HOUSING (3/4")
35	22-38565		1	ELBOW, GIMBAL HOUSING (OIL HOSE) - 45 DEGREES
36	32-48512		1	HOSE, OIL - GIMBAL HOUSING TO TRANSOM PLATE (8 1/4")
37	54-32523		2	CLAMP, OIL HOSE TO GIMBAL HOUSING AND TRANSOM PLATE
38	47347		1	CONNECTOR, HYDRAULIC - GIMBAL HOUSING
39	27-47644		1	GASKET, HYDRAULIC CONNECTOR
40	11-35888		2	NUT, GIMBAL HOUSING TO HUDRAULIC CONNECTOR STUD
41	17-47380		1	PIN, SWIVEL - GIMBAL HOUSING TO GIMBAL RING (LOWER)

CONTINUED ON NEXT PAGE ➡

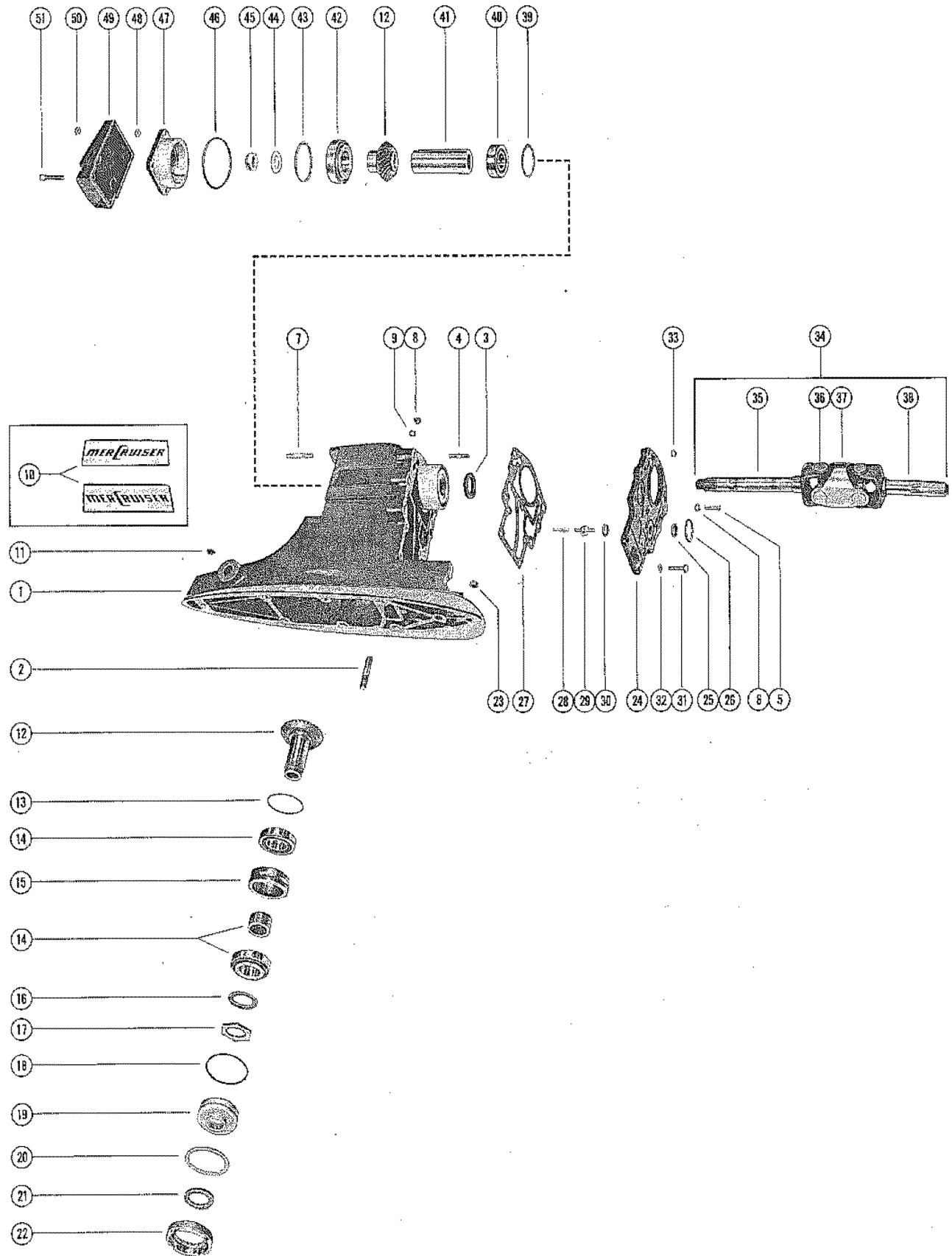
# GIMBAL HOUSING AND BELL HOUSING



## GIMBAL HOUSING AND BELL HOUSING

REF. NO.	PART NO.	SYM.	QTY.	DESCRIPTION
42	18-47381		1	COTTER PIN, RETAINING - LOWER SWIVEL PIN
43	10-34879		2	SCREW, BELL HOUSING TO TRANSOM PLATE (4 3/4")
44	12-32620		2	WASHER, RUBBER - BELL HOUSING SCREW
45	52670		1	JUMPER CABLE, GIMBAL HOUSING TO CHECK VALVE GUIDE COVER
46	10-47225		1	SCREW, JUMPER CABLE

# DRIVE SHAFT HOUSING ASSEMBLY AND GEAR ASSEMBLY

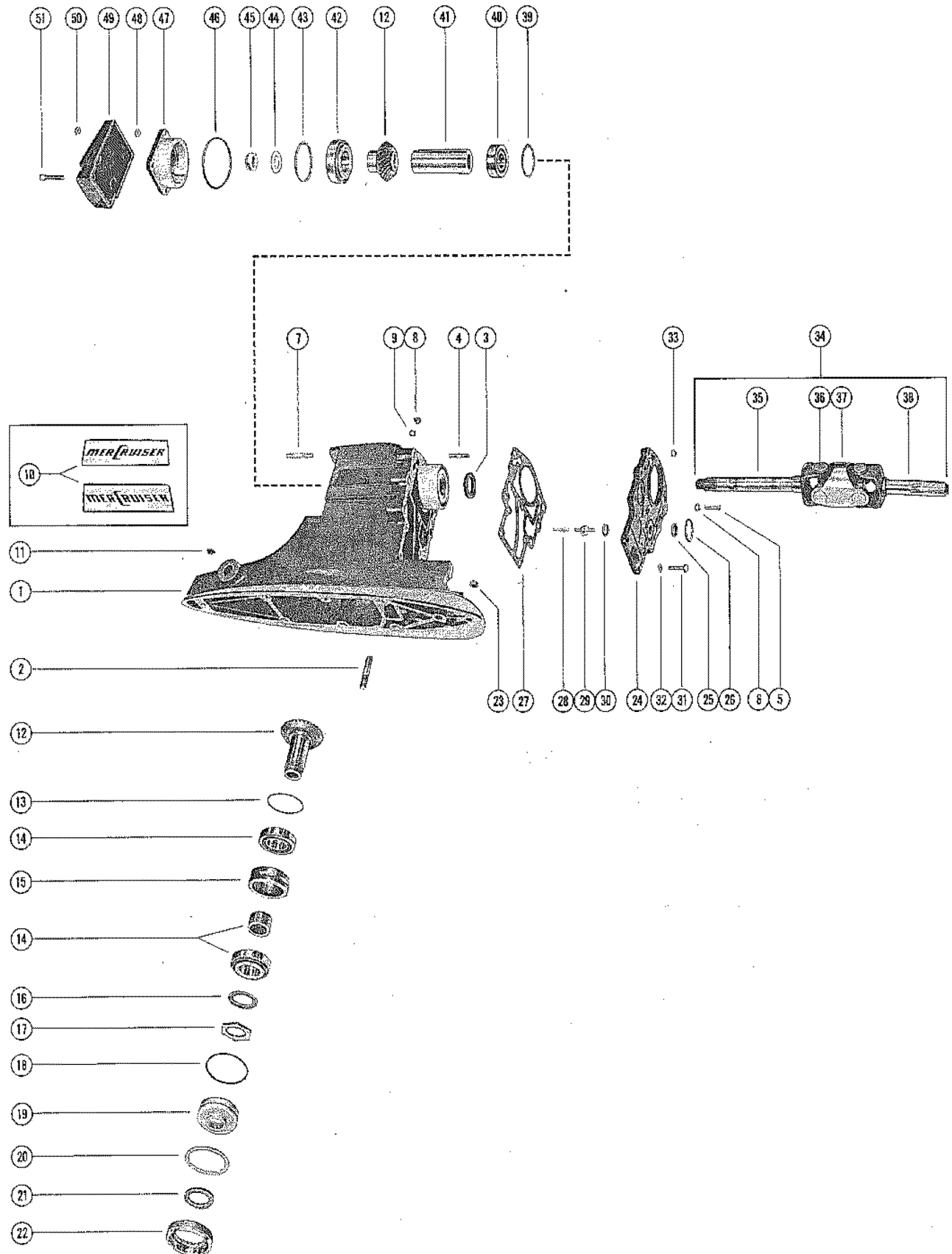


# DRIVE SHAFT HOUSING ASSEMBLY AND GEAR ASSEMBLY

REF. NO.	PART NO.	SYM.	QTY.	DESCRIPTION
1	1567-3152A1		1	DRIVE SHAFT HOUSING ASSEMBLY <b>SERIAL 00000000-30010963</b>
2	1567-3152A37		1	DRIVE SHAFT HOUSING ASSEMBLY <b>SERIAL 30010964-09999999</b>
	16-57985		6	STUD, DRIVE SHAFT HOUSING TO GEAR HOUSING (2 13/16")
3	26-38105		1	OIL SEAL, DRIVE SHAFT HOUSING (UNIVERSAL JOINT)
4	16-57932		7	STUD, DRIVE SHAFT HOUSING TO FRONT COVER (1 3/4) <b>SERIAL 00000000-03001963</b>
5	10-58642		7	SCREW, FRONT COVER TO DRIVE SHAFT HOUSING (1 1/2") <b>SERIAL 03001964-09999999</b>
6	13-58643		7	LOCKWASHER, FRONT COVER SCREW <b>SERIAL 03001964-09999999</b>
7	16-57984		2	STUD, DRIVE SHAFT HOUSING TO RETAINER AND REAR COVER (2 3/8)
	16-57983		2	STUD, DRIVE SHAFT HOUSING TO RETAINER AND REAR COVER (2 7/8)
8	10-28634		1	SCREW, VENT - DRIVE SHAFT HOUSING
9	12-20260		1	WASHER, SEAL - VENT SCREW
10	37-39428A1		1	DECAL SET, DRIVE SHAFT HOUSING <b>SERIAL 00000000-27610141</b>
	37-56036A1		1	DECAL SET, DRIVE SHAFT HOUSING <b>SERIAL 02761142-03001963</b>
	37-56036A2		1	DECAL SET, DRIVE SHAFT HUSING <b>SERIAL 03001964-09999999</b>
11	19-47579		1	PLUG, TRIM TAB HOLE - DRIVE SHAFT HOUSING
12	43-47309A1		1	GEAR ASSEMBLY, COMPLETE (1.5:1 GEAR RATIO)
	43-47237A1		1	GEAR ASSEMBLY, COMPLETE (2:1 GEAR RATIO)
13	15-34800A1		AR	SHIM ASS'Y, ROLLER BEARING TO DRIVE SHAFT HOUSING (.002-3-5-
14	31-34804A4		1	TAPERED ROLLER BEARING ASSEMBLY, COMPLETE
15	23-47285		1	SPACER, TAPERED ROLLER BEARING CUPS
16	12-47451		1	WASHER, TAPERED ROLLER BEARING TO DRIVEN GEAR
17	11-47449		1	NUT, TAPERED ROLLER BEARING TO DRIVEN GEAR
18	25-47288		1	"O" RING, TAPERED ROLLER BEARING ADAPTOR
19	47303		1	ADAPTOR, TAPERED ROLLER BEARING
20	12-47289		1	WASHER, TAPERED ROLLER BEARING ADAPTOR
21	27-47290		1	GASKET, TAPERED ROLLER BEARING ADAPTOR
22	47304		1	RETAINER, TAPERED ROLLER BEARING TO DRIVE SHAFT HOUSING
23	11-47302		1	NUT, GEAR HOUSING TO DRIVE SHAFT HOUSING STUD (9/16-18)
	11-34933		1	NUT, GEAR HOUSING TO DRIVE SHAFT HOUSING STUD (7/16-20)
24	48125A1		1	COVER ASSEMBLY, FRONT - DRIVE SHAFT HOUSING <b>SERIAL 00000000-28105891</b>
	58619A1		1	COVER ASSEMBLY, FRONT - DRIVE SHAFT HOUSING <b>SERIAL 02815892-09999999</b>

CONTINUED ON NEXT PAGE ➡

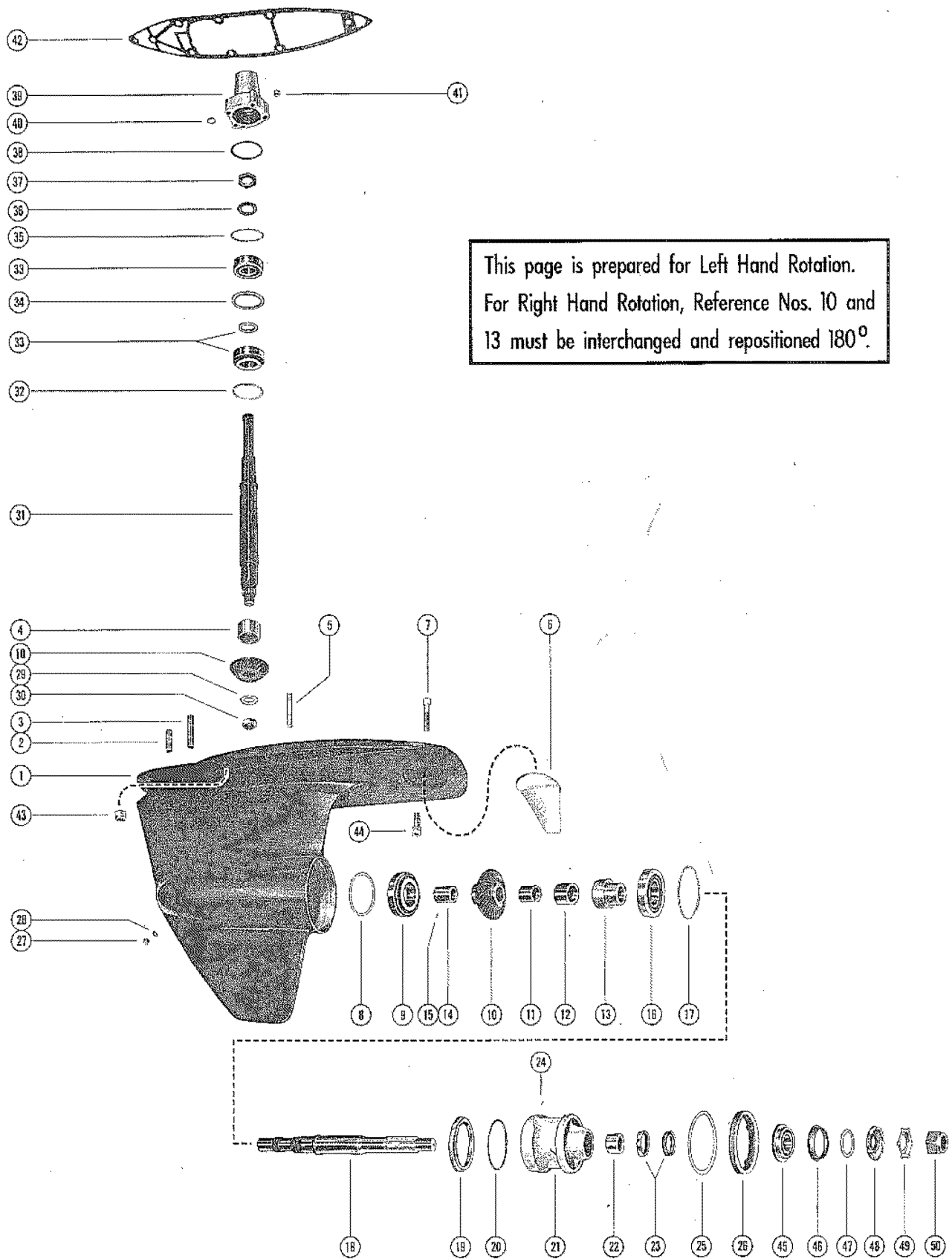
# DRIVE SHAFT HOUSING ASSEMBLY AND GEAR ASSEMBLY



# DRIVE SHAFT HOUSING ASSEMBLY AND GEAR ASSEMBLY

REF. NO.	PART NO.	SYM.	QTY.	DESCRIPTION
25	26-48443		1	OIL SEAL, FRONT COVER
26	25-20266		1	"O" RING, FRONT COVER
27	27-48407		1	GASKET, FRONT COVER
28	24-48442		1	SPRING, TENSION - OIL RELEASE CHECK VALVE
29	20-48219		1	CHECK VALVE, OIL RELEASE
30	25-48452		1	QUAD RING, OIL RELEASE CHECK VALVE
31	10-47658		2	SCREW, FRONT COVER TO DRIVE SHAFT HOUSING
32	13-47659		2	LOCKWASHER, FRONT COVER SCREW
33	11-34863		7	NUT, FRONT COVER STUD <b>SERIAL 00000000-30001963</b>
34	47312A1		1	UNIVERSAL JOINT ASSEMBLY, PINION GEAR
35	47312		1	YOKE, UNIVERSAL JOINT (GEAR END)
36	48153		2	CROSS AND BEARING ASSEMBLY, UNIVERSAL JOINT
37	47746		1	SOCKET, CENTER - UNIVERSAL JOINT
38	47311		1	YOKE, UNIVERSAL JOINT (COUPLING END)
39	15-36178A1		AR	SHIM ASS'Y, ROLLER BEARING TO DRIVE SHAFT HOUSING (.022-3-5-
40	31-39908A1		1	TAPERED ROLLER BEARING ASSEMBLY, UNIVERSAL JOINT
41	23-47305		1	SPACER, TAPERED ROLLER BEARING
42	31-34804A3		1	TAPERED ROLLER BEARING ASSEMBLY, PINION GEAR
43	15-34822A1		AR	SHIM ASSEMBLY, TAPERED ROLLER BEARING TO RETAINER (.002-3-5-
44	12-34869		1	WASHER, PINION GEAR TO UNIVERSAL JOINT <b>SERIAL 00000000-02529424</b>
	12-53212		1	WASHER, PINION GEAR TO UNIVERSAL JOINT <b>SERIAL 02529425-09999999</b>
45	11-34862		1	NUT, PINION GEAR TO UNIVERSAL JOINT
46	25-47291		1	"O" RING, TAPERED ROLLER BEARING RETAINER
47	47314		1	RETAINER, TAPERED ROLLER BEARING
48	11-35053		4	NUT, RETAINER TO DRIVE SHAFT HOUSING STUD
49	47322		1	COVER, REAR - DRIVE SHAFT HOUSING <b>SERIAL 00000000-03001963</b>
	58645		1	COVER, REAR - DRIVE SHAFT HOUSING <b>SERIAL 03001964-09999999</b>
50	11-35053		4	NUT, REAR COVER TO DRIVE SHAFT HOUSING STUD
51	10-47432		2	SCREW, REAR COVER TO DRIVE SHAFT HOUSING (2") <b>SERIAL 00000000-03001963</b>

# GEAR HOUSING ASSEMBLY, COMPLETE



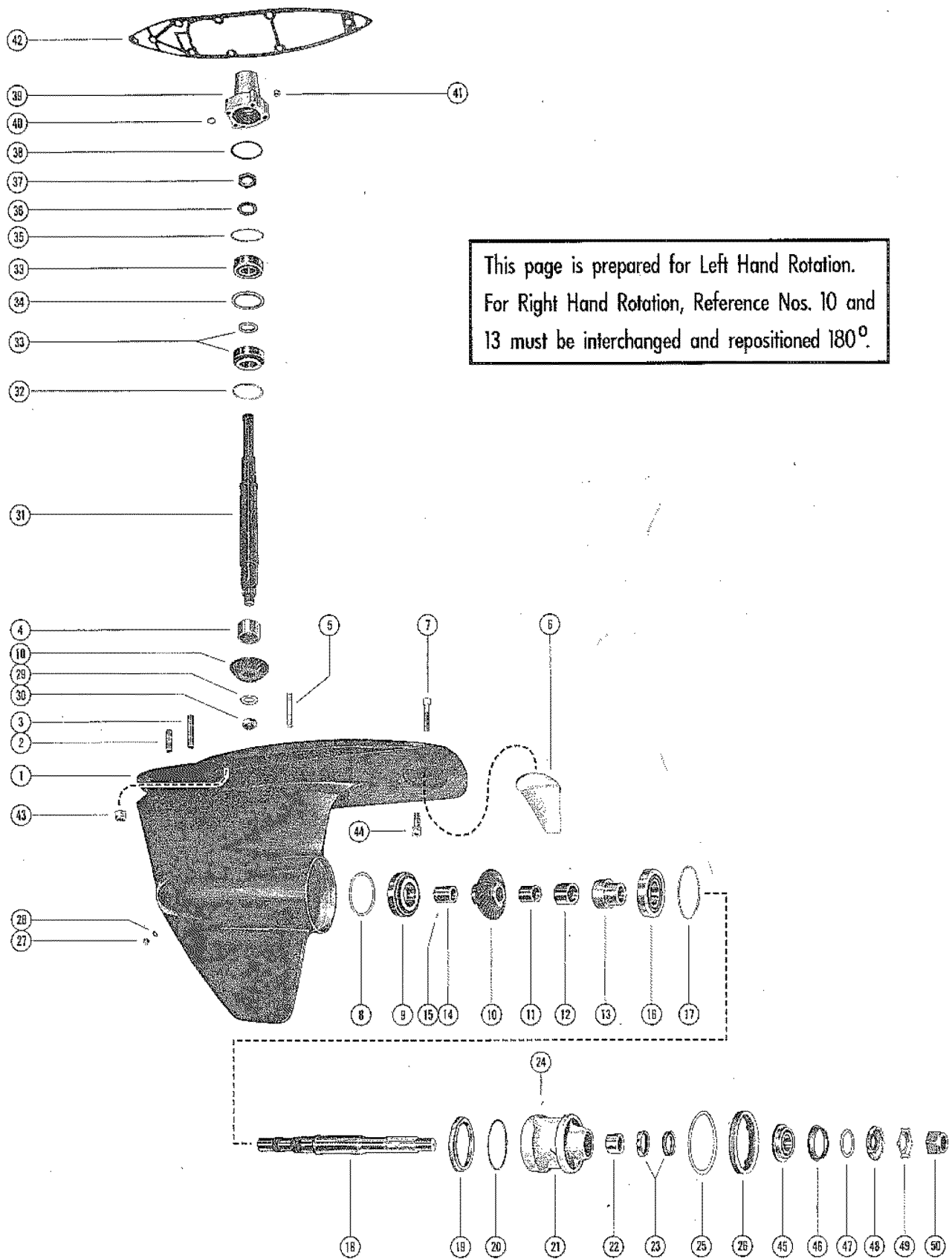


# GEAR HOUSING ASSEMBLY, COMPLETE

REF. NO.	PART NO.	SYM.	QTY.	DESCRIPTION
-	1636-3153A6		1	GEAR HOUSING ASSEMBLY, COMPLETE (LEFT HAND ROTATION) SERIAL 00000000-02815891
-	1636-3153A5		1	GEAR HOUSING ASSEMBLY, COMPLETE (RIGHT HAND ROTATION) SERIAL 00000000-02815891
-	1636-4354A5		1	GEAR HOUSING ASSEMBLY, COMPLETE (LEFT HAND ROTATION) SERIAL 02815892-09999999
-	1636-4354A4		1	GEAR HOUSING ASSEMBLY, COMPLETE (RIGHT HAND ROTATION) SERIAL 02815892-09999999
1	1636-3153A1		1	GEAR HOUSING ASSEMBLY SERIAL 00000000-02815891
	1636-4354A3		1	GEAR HOUSING ASSEMBLY SERIAL 02815892-09999999
2	16-57982		1	STUD, GEAR HOUSING TO DRIVE SHAFT HOUSING (1 7/8")
3	16-57986		1	STUD, GEAR HOUSING TO DRIVE SHAFT HOUSING (2 9/16")
4	31-35246		1	ROLLER BEARING, DRIVE SHAFT
5	16-57981		4	STUD, BEARING RETAINER TO GEAR HOUSING (3")
6	34127A1		1	TRIM TAB ASSEMBLY, GEAR HOUSING
7	10-49354		1	SCREW, TRIM TAB TO GEAR HOUSING (2 1/2")
8	15-47295A1		AR	SHIM ASSEMBLY, ROLLER BEARING TO GEAR HOUSING (.002-3-5-10)
9	31-47484A1		1	TAPERED ROLLER BEARING ASSEMBLY, PROPELLER GEAR
10	43-53572A2		1	GEAR ASSEMBLY (DRIVE AND PINION)
11	23-48016		1	SPACER, SPLIT - PROPELLER SHAFT
12	23-48015		1	SPACER, PROPELLER SHAFT
13	53515A1		1	ADAPTOR ASSEMBLY, TAPERED ROLLER BEARING SERIAL 00000000-02529424
	53516		1	ADAPTOR, TAPERED ROLLER BEARING SERIAL 02529425-09999999
14	23-48011		1	SLEEVE, TAPERED ROLLER BEARING ADAPTOR
15	17-53308		1	PIN, DOWEL - ADAPTOR SLEEVE
16	31-47484A1		1	TAPERED ROLLER BEARING ASSEMBLY
17	15-47297A1		AR	SHIM ASSEMBLY, ROLLER BEARING TO THRUST RING (.002-3-5-10)
18	44-47893		1	PROPELLER SHAFT (1 1/4-7 THREAD)
	44-53185A1		1	PROPELLER SHAFT ASSEMBLY (1 14-12 THREAD)
19	47307		1	RING, THRUST - BEARING CARRIER
20	25-47298		1	"O" RING, BEARING CARRIER
21	47318A1		1	BEARING CARRIER ASSEMBLY SERIAL 00000000-02529424
	52623A2		1	BEARING CARRIER ASSEMBLY SERIAL 02529425-09999999
22	31-47946		1	BEARING, ROLLER - BEARING CARRIER
23	26-48013		2	OIL SEAL, BEARING CARRIER
24	28-30281		1	KEY, LOCATING - BEARING CARRIER
25	12-47539		1	WASHER, THRUST - GEAR HOUSING COVER SERIAL 00000000-02529424
26	47308		1	COVER, GEAR HOUSING SERIAL 00000000-02529424

CONTINUED ON NEXT PAGE ➡

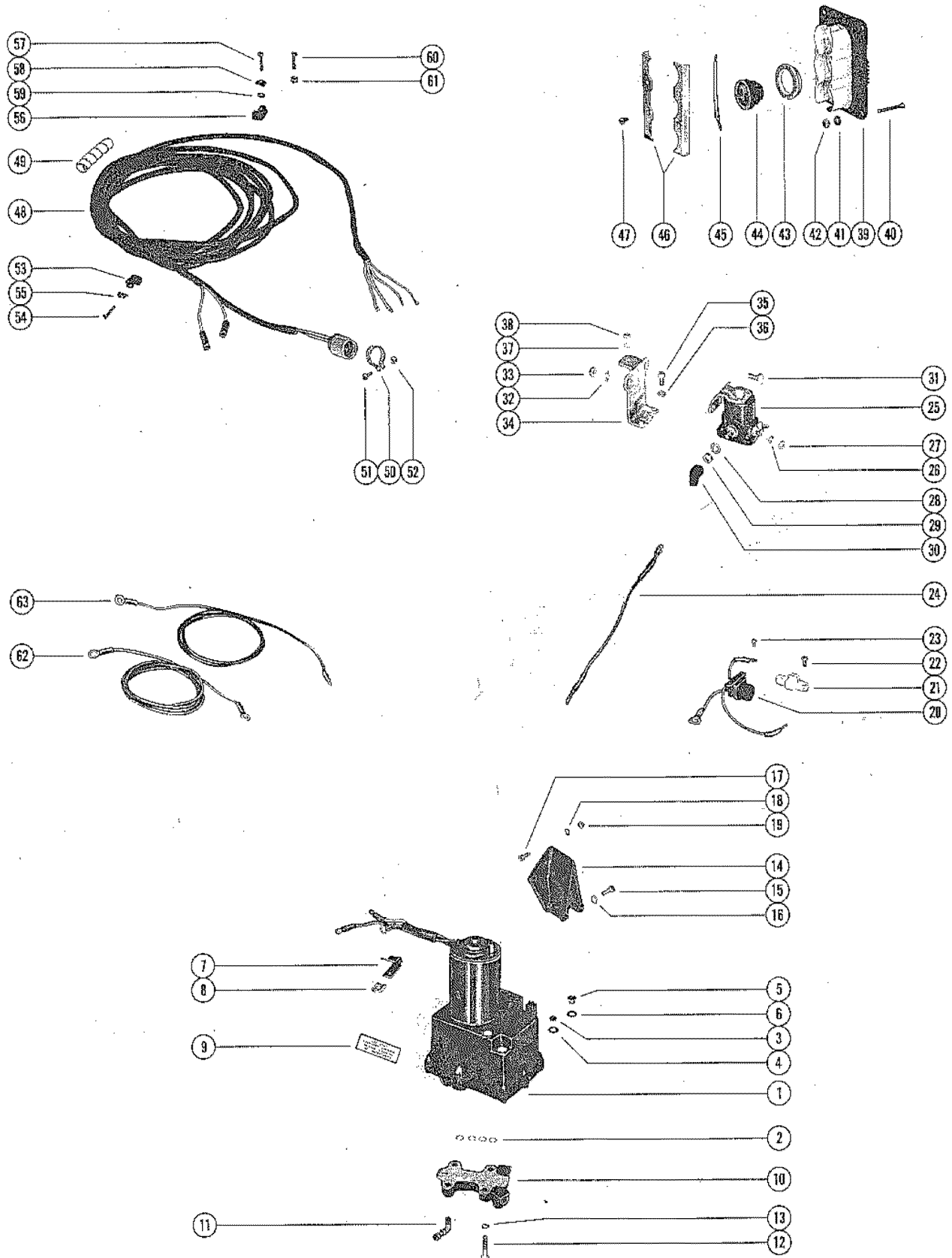
# GEAR HOUSING ASSEMBLY, COMPLETE



# GEAR HOUSING ASSEMBLY, COMPLETE

REF. NO.	PART NO.	SYM.	QTY.	DESCRIPTION
25	14-52553		1	TAB WASHER, GEAR HOUSING COVER <b>SERIAL 02529425-09999999</b>
26	52622		1	COVER, GEAR HOUSING <b>SERIAL 02529425-09999999</b>
27	10-28634		1	SCREW, VENT - GEAR HOUSING
28	12-20260		1	WASHER, SEAL - VENT SCREW
29	12-32073		1	WASHER, PINION GEAR TO DRIVE SHAFT
30	11-56041		1	NUT, PINION GEAR TO DRIVE SHAFT
31	45-47323		1	DRIVE SHAFT
32	15-39808A1		AR	SHIM ASSEMBLY, ROLLER BEARING TO GEAR HOUSING (.002-3-5-10)
33	31-47669A2		1	TAPERED ROLLER BEARING ASSEMBLY, COMPLETE (DRIVE SHAFT)
34	23-47603		1	SPACER, TAPERED ROLLER BEARING CUPS
35	15-39808A1		AR	SHIM ASSEMBLY, ROLLER BEARING TO RETAINER (.002-3-5-10)
36	12-56042		1	WASHER, TAPERED ROLLER BEARING TO DRIVE SHAFT
37	11-34826		1	NUT, TAPERED ROLLER BEARING TO DRIVE SHAFT
38	25-20081		1	"O" RING, BEARING RETAINER (LARGE)
39	47315		1	RETAINER, TAPERED ROLLER BEARING
40	25-45711		1	"O" RING, BEARING RETAINER (SMALL)
41	11-34932		4	NUT, BEARING RETAINER TO GEAR HOUSING STUD
42	27-47317		1	GASKET, GEAR HOUSING TO DRIVE SHAFT HOUSING
43	11-47302		6	NUT, DRIVE SHAFT HOUSING TO GEAR HOUSING STUD
44	10-47557		1	SCREW, GEAR HOUSING TO DRIVE SHAFT HOUSING (1 1/2")
45	48018A1		1	THRUST HUB AND WASHER ASSEMBLY
46	12-31642		1	WASHER, CUPPED - THRUST HUB
47	12-37763		1	WASHER, THRUST - BEARING CARRIER
48	12-48014		1	WASHER, SPLINED - PROPELLER SHAFT
49	14-48012		1	TAB WASHER, PROPELLER NUT
50	11-52846		1	NUT, PROPELLER (1 1/4-7 THREAD)
	11-53186		1	NUT, PROPELLER (1 1/4-12 THREAD) <b>PART OF B-44-53185A1 PROPELLER SHAFT ASSEMBLY</b>

# HYDRAULIC PUMP AND TRIM CONTROL PANEL

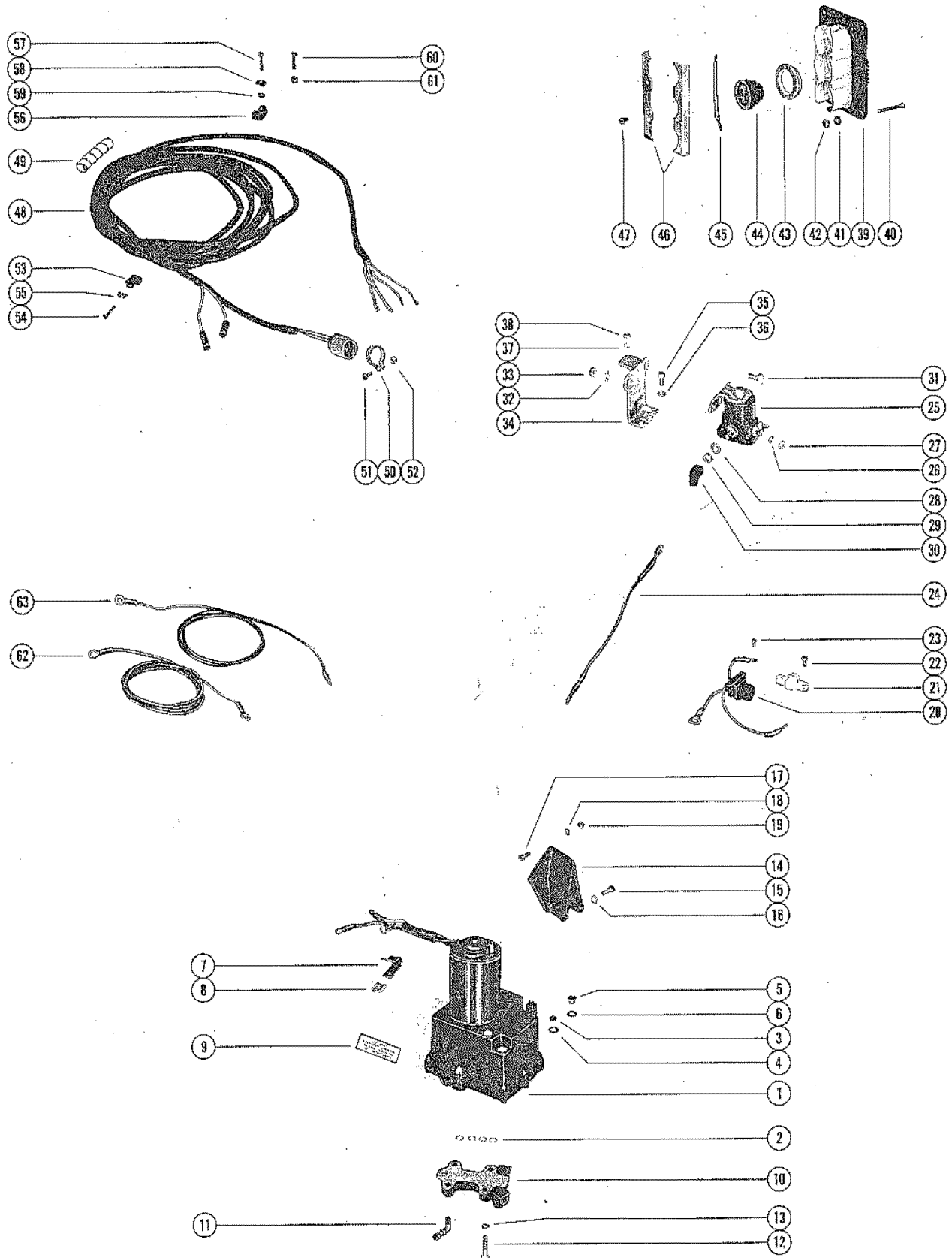


# HYDRAULIC PUMP AND TRIM CONTROL PANEL

REF. NO.	PART NO.	SYM.	QTY.	DESCRIPTION
1	45060A7		1	HYDRAULIC PUMP ASSEMBLY (SEE F3 FOR PARTS BREAKDOWN)
2	25-21720		4	"O" RING, HYDRAULIC PUMP TO CONTROL VALVE
3	10-46918		1	SCREW, VENT - HYDRAULIC PUMP
4	13-46917		1	LOCKWASHER, SEALING - VENT SCREW
5	10-28634		1	SCREW, FILLER - HYDRAULIC PUMP
6	12-20260		1	WASHER, SEALING - HYDRAULIC PUMP FILLER SCREW
7	54-37282		1	CLAMP, HYDRAULIC PUMP HARNESS
8	37821		1	"D" WASHER, HYDRAULIC PUMP HARNESS CLAMP
9	38-45372		1	DECAL, INSTRUCTIONS - HYDRAULIC PUMP
10	48077A4		1	CONTROL VALVE ASSEMBLY
	25-21720		4	"O" RING, HYDRAULIC PUMP TO CONTROL VALVE (SEE REFERENCE #2)
11	22-48169		1	ELBOW, CONTROL VALVE
12	10-F2191		4	SCREW, CONTROL VALVE TO HYDRAULIC PUMP (1 1/8")
13	13-26992		4	LOCKWASHER, CONTROL VALVE SCREW
14	48498		1	BRACKET, MOUNTING - HYDRAULIC PUMP
15	10-21477		4	SCREW, MOUNTING BRACKET TO TRANSOM PLATE (1 1/4")
16	13-21804		4	LOCKWASHER, MOUNTING BRACKET SCREW
17	10-26066		4	SCREW, HYDRAULIC PUMP TO MOUNTING BRACKET (1 1/4")
18	12-20546		4	WASHER, HYDRAULIC PUMP SCREW
19	11-21528		4	NUT, HYDRAULIC PUMP SCREW
20	45325		1	CONNECTOR AND HARNESS
21	45559		1	TERMINAL BLOCK, HYDRAULIC PUMP
22	10-28192		2	SCREW, TERMINAL BLOCK TO HYDRAULIC PUMP (1/2")
23	10-30663		2	SCREW, HARNESS LEADS TO TERMINAL BLOCK (3/8")
24	52752		1	JUMPER WIRE, STARTER SOLENOID TO MOUNTING BRACKET
25	25661		1	STARTER SOLENOID
26	13-26996		2	LOCKWASHER, STARTER SOLENOID TERMINAL (#10)
27	11-20645		2	NUT, STARTER SOLENOID TERMINAL (#10)
28	13-26993		2	LOCKWASHER, STARTER SOLENOID TERMINAL (5/16")
29	11-20083		2	NUT, STARTER SOLENOID TERMINAL (5/16")
30	46265		2	BOOT, RUBBER - STARTER SOLENOID TERMINAL
31	10-34290		2	SCREW, STARTER SOLENOID TO MOUNTING BRACKET (5/8")
32	13-26992		2	LOCKWASHER, STARTER SOLENOID SCREW
33	11-21825		2	NUT, STARTER SOLENOID SCREW
34	45321		1	BRACKET, MOUNTING - STARTER SOLENOID
35	10-21140		2	SCREW, MOUNTING BRACKET TO HYDRAULIC PUMP (1/2")
36	13-26992		2	LOCKWASHER, MOUNTING BRACKET SCREW
37	13-27660		1	LOCKWASHER, HYDRAULIC PUMP THRU BOLT
38	11-20645		1	NUT, MOUNTING BRACKET TO HYDRAULIC PUMP THRU BOLT

CONTINUED ON NEXT PAGE ➡

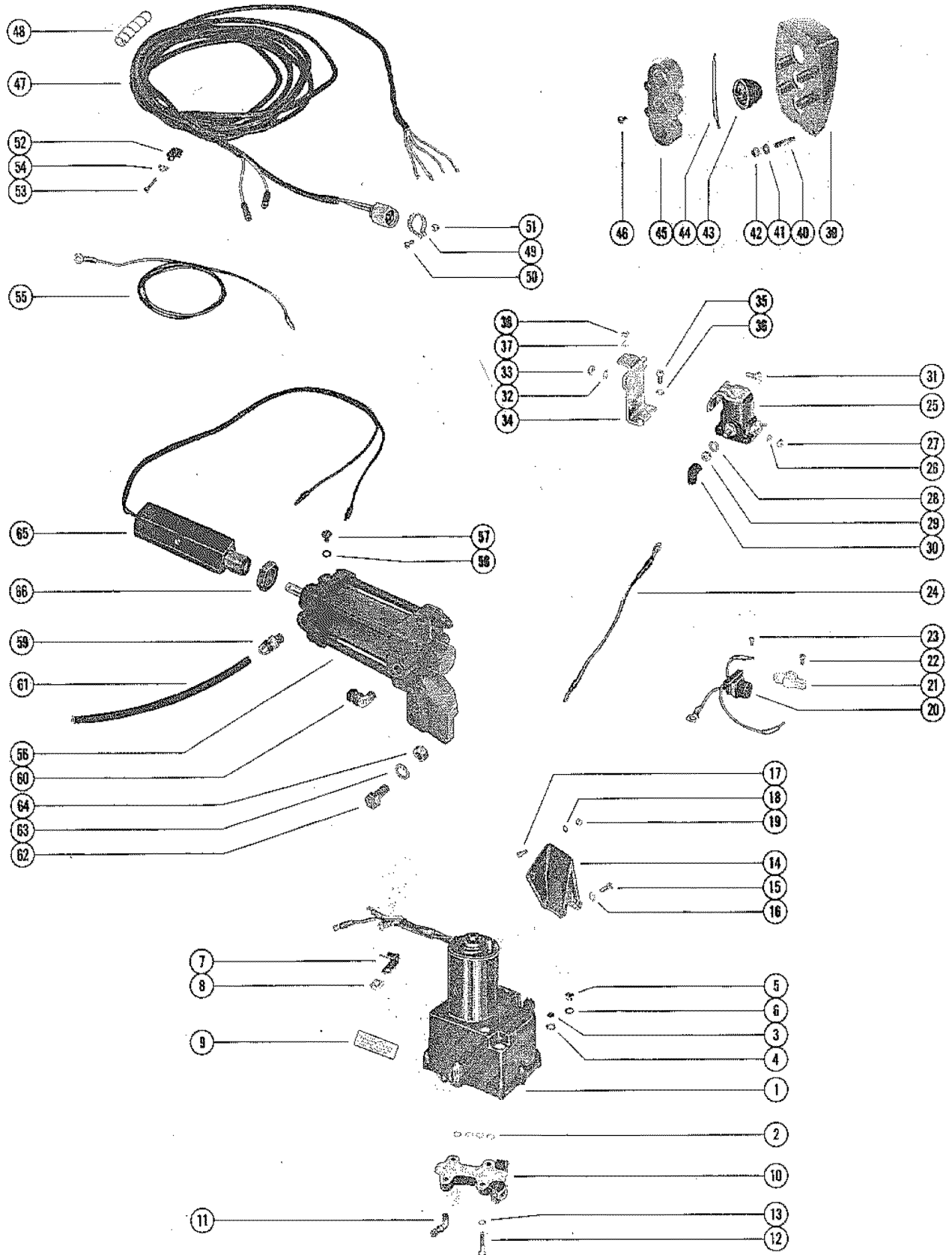
# HYDRAULIC PUMP AND TRIM CONTROL PANEL



## HYDRAULIC PUMP AND TRIM CONTROL PANEL

REF. NO.	PART NO.	SYM.	QTY.	DESCRIPTION
38	48413A2		1	CONTROL PANEL ASSEMBLY, COMPLETE <b>GREEN, WHITE AND YELLOW PUSH BUTTONS</b>
	48413A5		1	CONTROL PANEL ASSEMBLY, COMPLETE <b>RED/GREEN, WHITE AND RED PUSH BUTTONS</b>
39	48413		1	PANEL, CONTROL
40	10-32866		4	SCREW, CONTROL PANEL TO BOAR (2")
41	12-24676		4	WASHER, CONTROL PANEL SCREW
42	11-20190		4	NUT, CONTROL PANEL SCREW
43	48055		1	PUSH BUTTON, CONTROL PANEL (OUT - GREEN)
	48056		1	PUSH BUTTON, CONTROL PANEL (DOWN/IN - WHITE)
	48057		1	PUSH BUTTON, CONTROL PANEL (UP - YELLOW)
	53108		1	PUSH BUTTON, CONTROL PANEL (UP/OUT - RED/GREEN)
	53109		1	PUSH BUTTON, CONTROL PANEL (IN - WHITE)
	53110		1	PUSH BUTTON, CONTROL PANEL (UP - RED)
44	29759		3	SWITCH, PUSH BUTTON - CONTROL PANEL
45	48078		2	JUMPER WIRE, PUSH BUTTON SWITCH (RED - 3 1/4")
	53107		1	JUMPER WIRE, PUSH BUTTON SWITCH (PURPLE - 3")
46	48438		2	RETAINER, PUSH BUTTON SWITCH
47	10-32024		4	SCREW, SWITCH RETAINER TO CONTROL PANEL (3/8")
48	45341		1	HARNESS, CONTROL PANEL
49	33865		1	BINDER, NYLON - CONTROL PANEL HARNESS
50	54-46770		1	CLAMP, HARNESS ATTACHING
51	10-29227		1	SCREW, HARNESS ATTACHING CLAMP (1/2")
52	11-34388		1	NUT, HARNESS ATTACHING CLAMP SCREW
53	54-23567		3	CLAMP, HARNESS TO BOAT (9/16")
	54-22875		1	CLAMP, HARNESS TO BOAT (7/16")
54	10-35401		4	SCREW, WOOD - HARNESS CLAMP TO BOAT (1")
55	22789		4	"D" WASHER, HARNESS CLAMP SCREW
56	54-22875		3	CLAMP, HARNESS TO BOAT
57	10-33615		3	SCREW, WOOD - HARNESS CLAMP TO BOAT (1")
58	22789		3	"D" WASHER, HARNESS CLAMP SCREW
59	12-24676		3	WASHER, HARNESS CLAMP SCREW
60	10-20644		3	SCREW, HARNESS CLAMP TO BOAT (1")
61	11-20645		3	NUT, HARNESS CLAMP SCREW
62	52509		1	BATTERY LEAD (POSITIVE)
63	45551		1	BATTERY LEAD (NEGATIVE)

# HYDRAULIC PUMP AND TRIM INDICATOR CONTROL PANEL



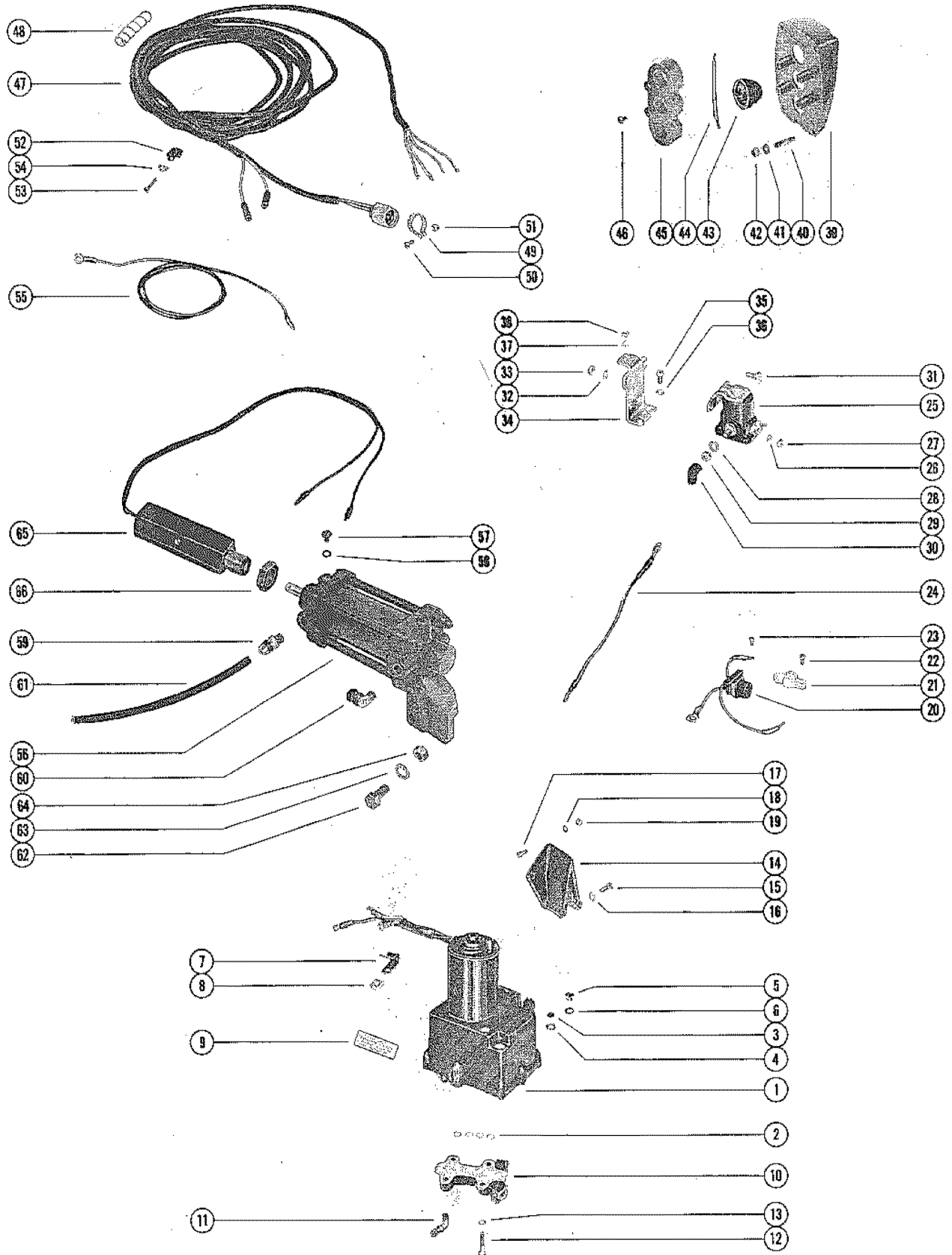


# HYDRAULIC PUMP AND TRIM INDICATOR CONTROL PANEL

REF. NO.	PART NO.	SYM.	QTY.	DESCRIPTION
1	45060A7		1	HYDRAULIC PUMP ASSEMBLY (SEE F3 FOR PARTS BREAKDOWN)
2	25-21720		4	"O" RING, HYDRAULIC PUMP TO CONTROL VALVE
3	10-46918		1	SCREW, VENT - HYDRAULIC PUMP
4	13-46917		1	LOCKWASHER, SEALING - VENT SCREW
5	10-28634		1	SCREW, FILLER - HYDRAULIC PUMP
6	12-20260		1	WASHER, SEALING - HYDRAULIC PUMP FILLER SCREW
7	54-37282		1	CLAMP, HYDRAULIC PUMP HARNESS
8	37821		1	"D" WASHER, HYDRAULIC PUMP HARNESS CLAMP
9	38-55823		1	DECAL, INSTRUCTIONS - HYDRAULIC PUMP
10	48077A4		1	CONTROL VALVE ASSEMBLY
	25-21720		4	"O" RING, HYDRAULIC PUMP TO CONTROL VALVE (SEE REFERENCE #2)
11	22-52666		1	ELBOW, CONTROL VALVE
12	10-21091		4	SCREW, CONTROL VALVE TO HYDRAULIC PUMP (1 1/8")
13	13-26992		4	LOCKWASHER, CONTROL VALVE SCREW
14	48498		1	BRACKET, MOUNTING - HYDRAULIC PUMP
15	10-21477		4	SCREW, MOUNTING BRACKET TO TRANSOM PLATE (1 1/4")
16	13-21804		4	LOCKWASHER, MOUNTING BRACKET SCREW
17	10-26066		4	SCREW, HYDRAULIC PUMP TO MOUNTING BRACKET (1 1/4")
18	12-20546		4	WASHER, HYDRAULIC PUMP SCREW
19	11-35814		4	NUT, HYDRAULIC PUMP SCREW
20	45325		1	CONNECTOR AND HARNESS
21	45559		1	TERMINAL BLOCK, HYDRAULIC PUMP
22	10-35519		2	SCREW, TERMINAL BLOCK TO HYDRAULIC PUMP (1/2")
23	10-30663		2	SCREW, HARNESS LEADS TO TERMINAL BLOCK (3/8")
24	52752		1	JUMPER WIRE, STARTER SOLENOID TO MOUNTING BRACKET
25	25661		1	STARTER SOLENOID
26	13-26996		2	LOCKWASHER, STARTER SOLENOID TERMINAL (#10)
27	11-20645		2	NUT, STARTER SOLENOID TERMINAL (#10)
28	13-26993		2	LOCKWASHER, STARTER SOLENOID TERMINAL (5/16")
29	11-20083		2	NUT, STARTER SOLENOID TERMINAL (5/16")
30	46265		2	BOOT, RUBBER - STARTER SOLENOID TERMINAL
31	10-34290		2	SCREW, STARTER SOLENOID TO MOUNTING BRACKET (5/8")
32	13-26992		2	LOCKWASHER, STARTER SOLENOID SCREW
33	11-21825		2	NUT, STARTER SOLENOID SCREW
34	45321		1	BRACKET, MOUNTING - STARTER SOLENOID
35	10-21140		2	SCREW, MOUNTING BRACKET TO HYDRAULIC PUMP (1/2")
36	13-26992		2	LOCKWASHER, MOUNTING BRACKET SCREW
37	13-27660		1	LOCKWASHER, HYDRAULIC PUMP THRU BOLT
38	11-20645		1	NUT, MOUNTING BRACKET TO HYDRAULIC PUMP THRU BOLT
	55642A3		1	CONTROL PANEL ASSEMBLY, COMPLETE

CONTINUED ON NEXT PAGE ➡

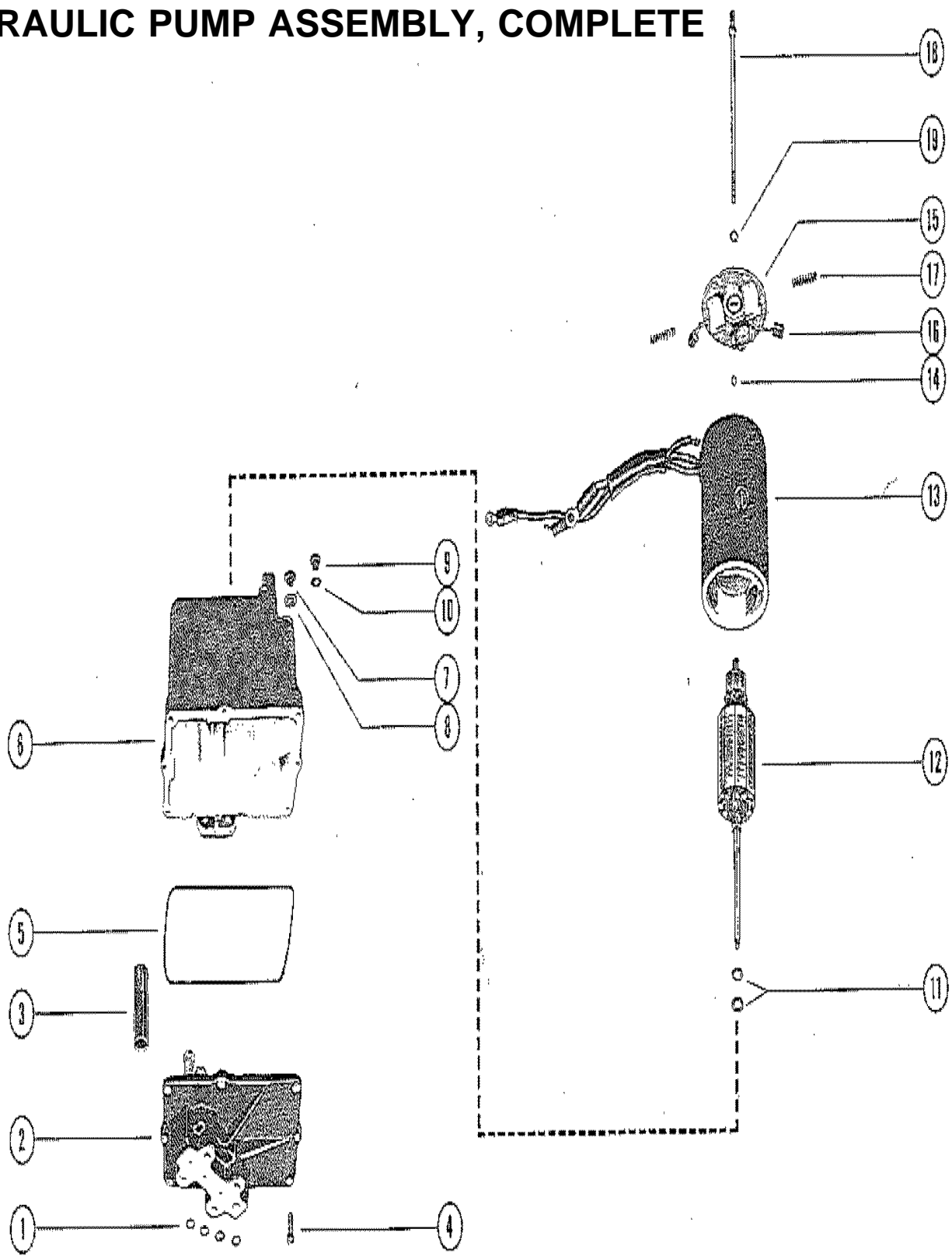
# HYDRAULIC PUMP AND TRIM INDICATOR CONTROL PANEL



# HYDRAULIC PUMP AND TRIM INDICATOR CONTROL PANEL

REF. NO.	PART NO.	SYM.	QTY.	DESCRIPTION
39	55642A1		1	PANEL ASSEMBLY, CONTROL
40	16-55422		4	STUD, CONTROL PANEL TO BOAT (2")
41	12-24676		4	WASHER, CONTROL PANEL STUD
42	11-27164		4	NUT, CONTROL PANEL STUD
43	55738A1		3	SWITCH, PUSH BUTTON - CONTROL PANEL
44	48078		1	JUMPER WIRE, PUSH BUTTON SWITCH (RED - 3 1/4")
	53107		1	JUMPER WIRE, PUSH BUTTON SWITCH (PURPLE - 3")
45	55641		1	RETAINER, PUSH BUTTON SWITCH
46	10-28192		4	SCREW, SWITCH RETAINER TO CONTROL PANEL (1/2")
47	45341		1	HARNESS, CONTROL PANEL
48	33865		1	BINDER, NYLON - CONTROL PANEL HARNESS
49	54-46770		1	CLAMP, HARNESS ATTACHING
50	10-29227		1	SCREW, HARNESS ATTACHING CLAMP (1/2")
51	11-34388		1	NUT, HARNESS ATTACHING CLAMP SCREW
52	54-24836		1	CLAMP, HARNESS TO BOAT (1/4")
53	10-35401		4	SCREW, WOOD - HARNESS CLAMP TO BOAT (1")
54	22789		4	"D" WASHER, HARNESS CLAMP SCREW
55	52509		1	BATTERY LEAD (POSITIVE)
	45551		1	BATTERY LEAD (NEGATIVE)
56	48285A4		1	SENDER ASSEMBLY, TRIM INDICATOR
57	10-45265		2	SCREW, BLEED - TRIM INDICATOR SENDER
58	25-45016		2	"O" RING, BLEED SCREW
59	22-48167		1	CONNECTOR, HYDRAULIC HOSE TO TRIM INDICATOR SENDER
60	22-48169		1	ELBOW, HYDRAULIC HOSE TO TRIM INDICATOR SENDER
61	32-52951A1		1	TUBING, HYDRAULIC - SENDER TO REVERSE LOCK VALVE (14")
62	10-48307		1	SCREW, TRIM INDICATOR SENDER TO TRANSOM (5 1/2")
	10-48308		1	SCREW, TRIM INDICATOR SENDER TO TRANSOM (3 3/4")
63	12-38742		2	WASHER, TRIM INDICATOR SENDER SCREW
64	11-23161		2	NUT, TRIM INDICATOR SENDER SCREW
65	56046A1		1	TRIM SENDER ASSEMBLY <b>FOR SEALING RING KIT, ORDER C-25-48283A1</b>
66	11-37984		1	NUT, TRIM SENDER

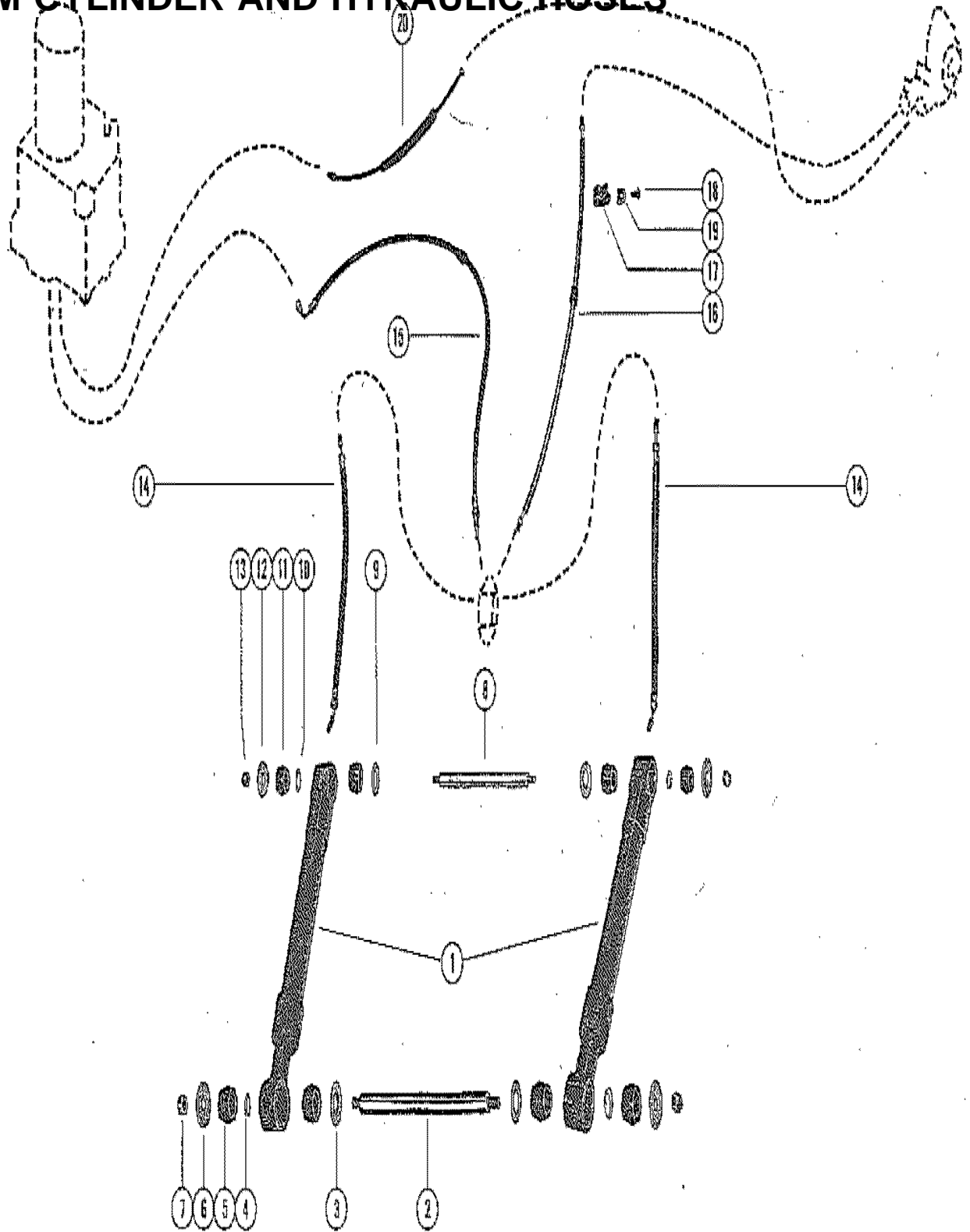
# HYDRAULIC PUMP ASSEMBLY, COMPLETE



## HYDRAULIC PUMP ASSEMBLY, COMPLETE

REF. NO.	PART NO.	SYM.	QTY.	DESCRIPTION
-	45060A7		1	HYDRAULIC PUMP ASSEMBLY, COMPLETE
1	25-26834		4	"O" RING, HYDRAULIC PUMP
2	392-2936		1	VALVE BODY AND GEAR ASSEMBLY
3	392-2618		1	CAM, VALVE BODY
4	10-20411		8	SCREW, VALVE BODY TO RESERVIOR (5/8")
5	392-2937		1	SEAL, RESERVIOR TO VALVE BODY AND GEAR
6	392-2939		1	RESERVIOR ASSEMBLY
7	10-46918		1	SCREW, VENT - HYDRAULIC PUMP
8	13-46917		1	LOCKWASHER, SEALING - VENT SCREW
9	10-28634		1	SCREW, FILLER - HYDRAULIC PUMP
10	12-20260		1	WASHER, SEALING - FILLER SCREW
11	392-2623		AR	WASHER, THRUST - ARMATURE
12	392-2943		1	ARMATURE, FIELD AND FRAME
13	392-2942		1	FIELD AND FRAME ASSEMBLY
14	392-2944		1	BALL, COMMUTATOR END PLATE
15	392-2940		1	PLATE ASSEMBLY, COMMUTATOR END
16	392-2941		1	BRUSH SET, COMMUTATOR END PLATE
17	392-2529		1	SPRING SET, BRUSH TENSION
18	392-2938		1	BOLT SET, THRU - PLATE AND FRAME TO RESERVIOR
19	13-26996		2	LOCKWASHER, THRU BOLT

# TRIM CYLINDER AND HYRAULIC HOSES



## TRIM CYLINDER AND HYRAULIC HOSES

REF. NO.	PART NO.	SYM.	QTY.	DESCRIPTION
1	47342A1		2	TRIM CYLINDER ASSEMBLY, COMPLETE (POWER TRIM)
	47342A3		2	TRIM CYLINDER ASSMEBLY, COLPETE (POWER TRIM WITH INDICATOR)
2	17-47375		1	PIN, ANCHOR - DRIVE SHAFT HOUSING (11 13/16")
3	12-47395		2	WASHER, DRIVE DSHAFT HOUSING ANCHOR PIN (59/64" I.D.)
4	24-49593		2	SPRING, DRIVE SHAFT HOUSING ANCHOR PIN
5	23-47392		4	BUSHING, RUBBER - DRIVE SHAFT HOUSING ANCHOR PIN
6	12-47394		2	WASHER, DRIVE SHAFT HOUSING ANCHOR PIN (33/64" I.D.)
7	11-35000		2	NUT, DRIVE SHAFT HOUSING ANCHOR PIN
8	17-47374		1	PIN, ANCHOR - TRIM CYLINDER TO GIMBAL RING (13 1/4")
9	12-47395		2	WASHER, GIMBAL RING ANCHOR PIN (59/64" I.D.)
10	24-49593		2	SPRING, GIMBAL RING ANCHOR PIN
11	23-47392		4	BUSHING, RUBBER - GIMBAL RING ANCHOR PIN
12	12-47394		2	WASHER, GIMBAL RING ANCHOR PIN (33/64" I.D.)
13	11-35000		2	NUT, GIMBAL RING ANCHOR PIN
14	32-47373		4	HOSE, HYDRAULIC - CONNECTOR TO TRIM CYLINDER (12 1/2")
15	32-47382		1	HOSE, HYDRAULIC - CONNECTOR TO HYDRAULIC PUMP (33")
16	32-47399		1	HOSE, HYDRAULIC - CONNECTOR TO REVERSE LOCK VALVE (34")
17	54-22740		3	CLIP, HYDRAULIC HOSE TO TRANSOM PLATE (3/8")
	54-39844A1		1	CLIP ASSEMBLY, HYDRAULIC HOSE TO TRANSOM PLATE (1/2")
18	10-30663		4	SCREW, HYDRAULIC HOSE CLIP
19	22789		4	"D" WASHER, HYDRAULIC HOSE CLIP SCREW
20	32-48327A2		1	TUBE ASS'Y, PUMP TO REVERSE LOCK VALVE (17 1/2")

# PARTS INDEX

Part Number	Description	Pg.	Ref. No.	Part Number	Description	Pg.	Ref. No.
22789	"D" WASHER, HARNESS CLAMP SCREW . . . . .	21	55	46265	BOOT, RUBBER - STARTER SOLENOID TERMINAL . . .	19	30
22789	"D" WASHER, HARNESS CLAMP SCREW . . . . .	21	58	46265	BOOT, RUBBER - STARTER SOLENOID TERMINAL . . .	23	30
22789	"D" WASHER, HARNESS CLAMP SCREW . . . . .	25	54	46972A1	BELL HOUSING ASSEMBLY	7	1
22789	"D" WASHER, HYDRAULIC HOSE CLIP SCREW . . . . .	29	19	46973A1	GIMBAL HOUSING ASSEMBLY . . . . .	7	21
22789	"D" WASHER, WIRING HARNESS CLIP SCREW . . .	3	3	46986	PLATE, TRANSOM (POWER TRIM) . . . . .	3	1
25661	STARTER SOLENOID . . . . .	19	25	47303	ADAPTOR, TAPERED ROLLER BEARING . . . . .	11	19
25661	STARTER SOLENOID . . . . .	23	25	47304	RETAINER, TAPERED ROLLER BEARING TO DRIVE SHAFT HOUSING . .	11	22
29359	LUBRICAP, GIMBAL HOUSING GREASE FITTING . . . . .	7	29	47307	RING, THRUST - BEARING CARRIER . . . . .	15	19
29759	SWITCH, PUSH BUTTON - CONTROL PANEL . . . . .	21	44	47308	COVER, GEAR HOUSING . .	15	26
31899	PLATE, RETAINER - TILT STOP SWITCH TO GIMBAL RING . . . . .	5	21	47311	YOKE, UNIVERSAL JOINT (COUPLING END) . . . . .	13	38
33865	BINDER, NYLON - CONTROL PANEL HARNESS . . . . .	21	49	47312	YOKE, UNIVERSAL JOINT (GEAR END) . . . . .	13	35
33865	BINDER, NYLON - CONTROL PANEL HARNESS . . . . .	25	48	47312A1	UNIVERSAL JOINT ASSEMBLY, PINION GEAR	13	34
34127A1	TRIM TAB ASSEMBLY, GEAR HOUSING . . . . .	15	6	47314	RETAINER, TAPERED ROLLER BEARING . . . . .	13	47
34762A1	PLATE ASSEMBLY, INHIBITOR - GIMBAL HOUSING . . . . .	7	33	47315	RETAINER, TAPERED ROLLER BEARING . . . . .	17	39
35221	RING, SWIVEL - CBLE GUIDE TUBE . . . . .	3	23	47318A1	BEARING CARRIER ASSEMBLY . . . . .	15	21
37821	"D" WASHER, HYDRAULIC PUMP HARNESS CLAMP . .	19	8	47322	COVER, REAR - DRIVE SHAFT HOUSING . . . . .	13	49
37821	"D" WASHER, HYDRAULIC PUMP HARNESS CLAMP . .	23	8	47337A1	COVER ASSEMBLY, OIL RESERVIOR - TRAMSOM PLATE . . . . .	3	12
45060A7	HYDRAULIC PUMP ASSEMBLY (SEE F3 FOR PARTS BREAKDOWN) . . .	19	1	47342A1	TRIM CYLINDER ASSEMBLY, COMPLETE (POWER TRIM) . . . . .	29	1
45060A7	HYDRAULIC PUMP ASSEMBLY (SEE F3 FOR PARTS BREAKDOWN) . . .	23	1	47342A3	TRIM CYLINDER ASSMEBLY, COLPETE (POWER TRIM WITH INDICATOR) . . . . .	29	1
45060A7	HYDRAULIC PUMP ASSEMBLY, COMPLETE . .	27	-	47347	CONNECTOR, HYDRAULIC - GIMBAL HOUSING . . . . .	7	38
45321	BRACKET, MOUNTING - STARTER SOLENOID . . . .	19	34	47350A2	GIMBAL RING ASSEMBLY . .	5	1
45321	BRACKET, MOUNTING - STARTER SOLENOID . . . .	23	34	47367	LEVER, STEERING - UPPER SWIVEL SHAFT . . . . .	5	11
45325	CONNECTOR AND HARNESS . . . . .	19	20	47370A1	BELLOWS, ASSEMBLY, UNIVERSAL JOINT . . . . .	7	19
45325	CONNECTOR AND HARNESS . . . . .	23	20	47438A1	TILT STOP SWITCH ASSEMBLY, GIMBAL RING	5	18
45341	HARNESS, CONTROL PANEL . . . . .	21	48	47645	SHAFT, UPPER SWIVEL - GIMBAL RING TO GIMBAL HOUSING . . . . .	5	8
45341	HARNESS, CONTROL PANEL . . . . .	25	47	47746	SOCKET, CENTER - UNIVERSAL JOINT . . . . .	13	37
45551	BATTERY LEAD (NEGATIVE)	21	63	48018A1	THRUST HUB AND WASHER ASSEMBLY . . . . .	17	45
45551	BATTERY LEAD (NEGATIVE)	25	55	48055	PUSH BUTTON, CONTROL PANEL (OUT - GREEN) . .	21	43
45559	TERMINAL BLOCK, HYDRAULIC PUMP . . . . .	19	21				



# PARTS INDEX

Part Number	Description	Pg.	Ref. No.	Part Number	Description	Pg.	Ref. No.
48057	PUSH BUTTON, CONTROL PANEL (UP - YELLOW) ..	21	43	53109	PUSH BUTTON, CONTROL PANEL (IN - WHITE) . . . .	21	43
48077A4	CONTROL VALVE ASSEMBLY . . . . .	19	10	53110	PUSH BUTTON, CONTROL PANEL (UP - RED) . . . . .	21	43
48077A4	CONTROL VALVE ASSEMBLY . . . . .	23	10	53515A1	ADAPTOR ASSEMBLY, TAPERED ROLLER BEARING . . . . .	15	13
48078	JUMPER WIRE, PUSH BUTTON SWITCH (RED - 3 1/4") . . . . .	21	45	53516	ADAPTOR, TAPERED ROLLER BEARING . . . . .	15	13
48078	JUMPER WIRE, PUSH BUTTON SWITCH (RED - 3 1/4") . . . . .	25	44	55498	PLATE, TRANSOM (POWER TRIM WITH INDICATOR) .	3	1
48124	GUIDE, CHECK VALVE - BELL HOUSING . . . . .	7	7	55641	RETAINER, PUSH BUTTON SWITCH . . . . .	25	45
48125A1	COVER ASSEMBLY, FRONT - DRIVE SHAFT HOUSING	11	24	55642A1	PANEL ASSEMBLY, CONTROL . . . . .	25	39
48153	CROSS AND BEARING ASSEMBLY, UNIVERSAL JOINT . . . . .	13	36	55642A3	CONTROL PANEL ASSEMBLY, COMPLETE .	23	38
48163A1	COVER ASSEMBLY, CHECK VALVE GUIDE . . . . .	7	12	55738A1	SWITCH, PUSH BUTTON - CONTROL PANEL . . . . .	25	43
48285A4	SENDER ASSEMBLY, TRIM INDICATOR . . . . .	25	56	56038	EMBLEM, GIMBAL HOUSING	7	30
48413	PANEL, CONTROL . . . . .	21	39	56046A1	TRIM SENDER ASSEMBLY .	25	65
48413A2	CONTROL PANEL ASSEMBLY, COMPLETE .	21	38	58619A1	COVER ASSEMBLY, FRONT - DRIVE SHAFT HOUSING	11	24
48413A5	CONTROL PANEL ASSEMBLY, COMPLETE .	21	38	58645	COVER, REAR - DRIVE SHAFT HOUSING . . . . .	13	49
48438	RETAINER, PUSH BUTTON SWITCH . . . . .	21	46	10-20055	SCREW, RETAINER PLATE TO GIMBAL RING (3/8") ..	5	22
48498	BRACKET, MOUNTING - HYDRAULIC PUMP . . . . .	19	14	10-20367	SCREW, TILT STOP SWITCH COVER ATTACHING (7/16") . . . . .	5	19
48498	BRACKET, MOUNTING - HYDRAULIC PUMP . . . . .	23	14	10-20411	SCREW, VALVE BODY TO RESERVIOR (5/8") . . . . .	27	4
48992	INDICATOR, OIL LEVEL . . . . .	3	13	10-20644	SCREW, HARNESS CLAMP TO BOAT (1") . . . . .	21	60
49343	LEVER, ACTUATING - TILT STOP SWITCH . . . . .	5	23	10-21091	SCREW, CONTROL VALVE TO HYDRAULIC PUMP (1 1/8") . . . . .	23	12
52509	BATTERY LEAD (POSITIVE)	21	62	10-21140	SCREW, MOUNTING BRACKET TO HYDRAULIC PUMP (1/2") . . . . .	19	35
52509	BATTERY LEAD (POSITIVE)	25	55	10-21140	SCREW, MOUNTING BRACKET TO HYDRAULIC PUMP (1/2") . . . . .	23	35
52622	COVER, GEAR HOUSING ..	17	26	10-21477	SCREW, MOUNTING BRACKET TO TRANSOM PLATE (1 1/4") . . . . .	19	15
52623A2	BEARING CARRIER ASSEMBLY . . . . .	15	21	10-21477	SCREW, MOUNTING BRACKET TO TRANSOM PLATE (1 1/4") . . . . .	23	15
52670	JUMPER CABLE, GIMBAL HOUSING TO CHECK VALVE GUIDE COVER . . .	9	45	10-24644	SCREW, STEERING CABLE TO STEERING AREM (1 3/8") . . . . .	5	15
52752	JUMPER WIRE, STARTER SOLENOID TO MOUNTING BRACKET . . . . .	19	24	10-26066	SCREW, HYDRAULIC PUMP TO MOUNTING BRACKET (1 1/4") . . . . .	19	17
52752	JUMPER WIRE, STARTER SOLENOID TO MOUNTING BRACKET . . . . .	23	24	10-26066	SCREW, HYDRAULIC PUMP TO MOUNTING BRACKET (1 1/4") . . . . .	23	17
53107	JUMPER WIRE, PUSH BUTTON SWITCH (PURPLE - 3") . . . . .	21	45				
53107	JUMPER WIRE, PUSH BUTTON SWITCH (PURPLE - 3") . . . . .	25	44				
53108	PUSH BUTTON, CONTROL PANEL (UP/OUT - RED/GREEN) . . . . .	21	43				

# PARTS INDEX

Part Number	Description	Pg.	Ref. No.	Part Number	Description	Pg.	Ref. No.
10-28192	SCREW, TERMINAL BLOCK TO HYDRAULIC PUMP (1/2")	19	22	10-36154	SCREW, CHECK VALVE GUIDE COVER TO BELL HOUSING (1 3/8")	7	15
10-28634	SCREW, FILLER - HYDRAULIC PUMP	19	5	10-45265	SCREW, BLEED - TRIM INDICATOR SENDER	25	57
10-28634	SCREW, FILLER - HYDRAULIC PUMP	23	5	10-46918	SCREW, VENT - HYDRAULIC PUMP	19	3
10-28634	SCREW, FILLER - HYDRAULIC PUMP	27	9	10-46918	SCREW, VENT - HYDRAULIC PUMP	23	3
10-28634	SCREW, VENT - DRIVE SHAFT HOUSING	11	8	10-46918	SCREW, VENT - HYDRAULIC PUMP	27	7
10-28634	SCREW, VENT - GEAR HOUSING	17	27	10-47225	SCREW, JUMPER CABLE	9	46
10-29227	SCREW, HARNESS ATTACHING CLAMP (1/2")	21	51	10-47432	SCREW, REAR COVER TO DRIVE SHAFT HOUSING (2")	13	51
10-29227	SCREW, HARNESS ATTACHING CLAMP (1/2")	25	50	10-47450	SCREW, UPPER SWIVEL SHAFT RETAINING - GIMBAL RING (4")	5	6
10-30663	SCREW, HARNESS LEADS TO TERMINAL BLOCK (3/8")	19	23	10-47467	SCREW, TRANSMISSION PLATE TO TRANSMISSION MOUNTING BRACKET (5 1/2")	3	6
10-30663	SCREW, HARNESS LEADS TO TERMINAL BLOCK (3/8")	23	23	10-47557	SCREW, GEAR HOUSING TO DRIVE SHAFT HOUSING (1 1/2")	17	44
10-30663	SCREW, HYDRAULIC HOSE CLIP	29	18	10-47658	SCREW, FRONT COVER TO DRIVE SHAFT HOUSING	13	31
10-30663	SCREW, WIRING HARNESS CLIP TO TRANSMISSION PLATE (3/8")	3	4	10-48307	SCREW, TRIM INDICATOR SENDER TO TRANSMISSION (5 1/2")	25	62
10-31832	BOLT, PIVOT - SWIVEL RING TO TRANSMISSION PLATE	3	26	10-48308	SCREW, TRIM INDICATOR SENDER TO TRANSMISSION (3 3/4")	25	62
10-31903	SCREW, ACTUATING LEVER TO GIMBAL RING (3/8")	5	24	10-49354	SCREW, TRIM TAB TO GEAR HOUSING (2 1/2")	15	7
10-32024	SCREW, SWITCH RETAINER TO CONTROL PANEL (3/8")	21	47	10-54193	SCREW, STEERING LEVER TO UPPER SWIVEL SHAFT (2 1/2")	5	13
10-32565	SCREW, OIL RESERVIOR COVER TO TRANSMISSION PLATE "1"	3	17	10-58642	SCREW, FRONT COVER TO DRIVE SHAFT HOUSING (1 1/2")	11	5
10-32866	SCREW, CONTROL PANEL TO BOAR (2")	21	40	10-F2191	SCREW, CONTROL VALVE TO HYDRAULIC PUMP (1 1/8")	19	12
10-33615	SCREW, WOOD - HARNESS CLAMP TO BOAT (1")	21	57	11-20083	NUT, STARTER SOLENOID TERMINAL (5/16")	19	29
10-34290	SCREW, STARTER SOLENOID TO MOUNTING BRACKET (5/8")	19	31	11-20083	NUT, STARTER SOLENOID TERMINAL (5/16")	23	29
10-34290	SCREW, STARTER SOLENOID TO MOUNTING BRACKET (5/8")	23	31	11-20190	NUT, CONTROL PANEL SCREW	21	42
10-34763	SCREW, INHIBITOR PLATE TO GIMBAL HOUSING (3/4")	7	34	11-20361	NUT, STEERING CABLE SCREW	5	17
10-34879	SCREW, BELL HOUSING TO TRANSMISSION PLATE (4 3/4")	9	43	11-20645	NUT, HARNESS CLAMP SCREW	21	61
10-35401	SCREW, WOOD - HARNESS CLAMP TO BOAT (1")	21	54	11-20645	NUT, MOUNTING BRACKET TO HYDRAULIC PUMP THRU BOLT	19	38
10-35401	SCREW, WOOD - HARNESS CLAMP TO BOAT (1")	25	53	11-20645	NUT, MOUNTING BRACKET TO HYDRAULIC PUMP THRU BOLT	23	38
10-35519	SCREW, TERMINAL BLOCK TO HYDRAULIC PUMP (1/2")	23	22				

# PARTS INDEX

Part Number	Description	Pg.	Ref. No.	Part Number	Description	Pg.	Ref. No.
11-20645	NUT, STARTER SOLENOID TERMINAL (#10) . . . . .	19	27	11-47379	NUT, BELL HOUSING TO DRIVE SHAFT HOUSING STUD . . . . .	7	6
11-20645	NUT, STARTER SOLENOID TERMINAL (#10) . . . . .	23	27	11-47449	NUT, TAPERED ROLLER BEARING TO DRIVEN GEAR . . . . .	11	17
11-21528	NUT, HYDRAULIC PUMP SCREW . . . . .	19	19	11-52846	NUT, PROPELLER (1 1/4-7 THREAD) . . . . .	17	50
11-21825	NUT, STARTER SOLENOID SCREW . . . . .	19	33	11-53186	NUT, PROPELLER (1 1/4-12 THREAD) . . . . .	17	50
11-21825	NUT, STARTER SOLENOID SCREW . . . . .	23	33	11-56041	NUT, PINION GEAR TO DRIVE SHAFT . . . . .	17	30
11-22339	NUT, TRANSOM PLATE SCREW . . . . .	3	11	12-20260	WASHER, SEAL - VENT SCREW . . . . .	11	9
11-23161	NUT, STEERING LEVER SCREW . . . . .	5	14	12-20260	WASHER, SEAL - VENT SCREW . . . . .	17	28
11-23161	NUT, TRIM INDICATOR SENDER SCREW . . . . .	25	64	12-20260	WASHER, SEALING - FILLER SCREW . . . . .	27	10
11-27164	NUT, CONTROL PANEL STUD . . . . .	25	42	12-20260	WASHER, SEALING - HYDRAULIC PUMP FILLER SCREW . . . . .	19	6
11-30499	NUT, STEERING LEVER TO UPPER SWIVEL SHAFT . .	5	12	12-20260	WASHER, SEALING - HYDRAULIC PUMP FILLER SCREW . . . . .	23	6
11-34388	NUT, HARNESS ATTACHING CLAMP SCREW . . . . .	21	52	12-20546	WASHER, HYDRAULIC PUMP SCREW . . . . .	19	18
11-34388	NUT, HARNESS ATTACHING CLAMP SCREW . . . . .	25	51	12-20546	WASHER, HYDRAULIC PUMP SCREW . . . . .	23	18
11-34826	NUT, TAPERED ROLLER BEARING TO DRIVE SHAFT . . . . .	17	37	12-24676	WASHER, CONTROL PANEL SCREW . . . . .	21	41
11-34862	NUT, PINION GEAR TO UNIVERSAL JOINT . . . . .	13	45	12-24676	WASHER, CONTROL PANEL STUD . . . . .	25	41
11-34863	NUT, FRONT COVER STUD	13	33	12-24676	WASHER, HARNESS CLAMP SCREW . . . . .	21	59
11-34932	NUT, BEARING RETAINER TO GEAR HOUSING STUD	17	41	12-31642	WASHER, CUPPED - THRUST HUB . . . . .	17	46
11-34933	NUT, GEAR HOUSING TO DRIVE SHAFT HOUSING STUD (7/16-20) . . . . .	11	23	12-32073	WASHER, PINION GEAR TO DRIVE SHAFT . . . . .	17	29
11-35000	NUT, BELL HOUSING TO TRANSOM PLATE SCREW AND STUD . . . . .	3	2	12-32620	WASHER, RUBBER - BELL HOUSING SCREW . . . . .	9	44
11-35000	NUT, DRIVE SHAFT HOUSING ANCHOR PIN .	29	7	12-33171	WASHER, TRANSOM PLATE SCREW (41/64" I.D.) . . . . .	3	10
11-35000	NUT, GIMBAL RING ANCHOR PIN . . . . .	29	13	12-34858	WASHER, UPPER SWIVEL SHAFT . . . . .	5	2
11-35053	NUT, REAR COVER TO DRIVE SHAFT HOUSING STUD . . . . .	13	50	12-34869	WASHER, PINION GEAR TO UNIVERSAL JOINT . . . . .	13	44
11-35053	NUT, RETAINER TO DRIVE SHAFT HOUSING STUD .	13	48	12-34876	WASHER, BELL HOUSING TO TRANSOM PLATE SCREW AND STUD . . . . .	3	19
11-35814	NUT, HYDRAULIC PUMP SCREW . . . . .	23	19	12-37763	WASHER, THRUST - BEARING CARRIER . . . . .	17	47
11-35888	NUT, GIMBAL HOUSING TO HUDRAULIC CONNECTOR STUD . . . . .	7	40	12-38742	WASHER, TRIM INDICATOR SENDER SCREW . . . . .	25	63
11-37984	NUT, JAM - CABLE GUIDE TUBE . . . . .	3	22	12-47289	WASHER, TAPERED ROLLER BEARING ADAPTOR . . . . .	11	20
11-37984	NUT, TRIM SENDER . . . . .	25	66	12-47394	WASHER, DRIVE SHAFT HOUSING ANCHOR PIN (33/64" I.D.) . . . . .	29	6
11-47302	NUT, DRIVE SHAFT HOUSING TO GEAR HOUSING STUD . . . . .	17	43				

# PARTS INDEX

Part Number	Description	Pg.	Ref. No.	Part Number	Description	Pg.	Ref. No.
12-47395	WASHER, DRIVE DSHAFT HOUSING ANCHOR PIN (59/64" I.D.)	29	3	13-26996	LOCKWASHER, STARTER SOLENOID TERMINAL (#10)	23	26
12-47395	WASHER, GIMBAL RING ANCHOR PIN (59/64" I.D.)	29	9	13-26996	LOCKWASHER, THRU BOLT	27	19
12-47428	WASHER, BELL HOUSING TO DRIVE SHAFT HOUSING STUD	7	5	13-27660	LOCKWASHER, HYDRAULIC PUMP THRU BOLT	19	37
12-47451	WASHER, TAPERED ROLLER BEARING TO DRIVEN GEAR	11	16	13-27660	LOCKWASHER, HYDRAULIC PUMP THRU BOLT	23	37
12-47466	WASHER, FIBER - TRANSOM PLATE SCREW	3	8	13-31848	LOCKWASHER, SWIVEL RING PIVOT BOLT	3	27
12-47475	WASHER, TRANSOM PLATE SCREW (1 1/8" I.D.)	3	7	13-34846	LOCKWASHER, TRANSOM PLATE SCREW (DOUBLE WIND)	3	9
12-47533	WASHER, SWIVEL RING PIVOT BOLT	3	24	13-46917	LOCKWASHER, SEALING - VENT SCREW	19	4
12-47538	WASHER, UPPER SWIVEL SHAFT RETAINING SCREW	5	7	13-46917	LOCKWASHER, SEALING - VENT SCREW	23	4
12-47539	WASHER, THRUST - GEAR HOUSING COVER	15	25	13-46917	LOCKWASHER, SEALING - VENT SCREW	27	8
12-48014	WASHER, SPLINED - PROPELLER SHAFT	17	48	13-47659	LOCKWASHER, FRONT COVER SCREW	13	32
12-48313	WASHER, ANTI-GALLING - BELL HOUSING (HINGE PIN)	5	4	13-58643	LOCKWASHER, FRONT COVER SCREW	11	6
12-53212	WASHER, PINION GEAR TO UNIVERSAL JOINT	13	44	14-48012	TAB WASHER, PROPELLER NUT	17	49
12-56042	WASHER, TAPERED ROLLER BEARING TO DRIVE SHAFT	17	36	14-52553	TAB WASHER, GEAR HOUSING COVER	17	25
13-21804	LOCKWASHER, MOUNTING BRACKET SCREW	19	16	15-34800A1	SHIM ASS'Y, ROLLER BEARING TO DRIVE SHAFT HOUSING (.002-3-5-	11	13
13-21804	LOCKWASHER, MOUNTING BRACKET SCREW	23	16	15-34822A1	SHIM ASSEMBLY, TAPERED ROLLER BEARING TO RETAINER (.002-3-5-	13	43
13-26992	LOCKWASHER, CHECK VALVE GUIDE COVER SCREW	7	16	15-36178A1	SHIM ASS'Y, ROLLER BEARING TO DRIVE SHAFT HOUSING (.022-3-5-	13	39
13-26992	LOCKWASHER, CONTROL VALVE SCREW	19	13	15-39808A1	SHIM ASSEMBLY, ROLLER BEARING TO GEAR HOUSING (.002-3-5-10)	17	32
13-26992	LOCKWASHER, CONTROL VALVE SCREW	23	13	15-39808A1	SHIM ASSEMBLY, ROLLER BEARING TO RETAINER (.002-3-5-10)	17	35
13-26992	LOCKWASHER, MOUNTING BRACKET SCREW	19	36	15-47295A1	SHIM ASSEMBLY, ROLLER BEARING TO GEAR HOUSING (.002-3-5-10)	15	8
13-26992	LOCKWASHER, MOUNTING BRACKET SCREW	23	36	15-47297A1	SHIM ASSEMBLY, ROLLER BEARING TO THRUST RING (.002-3-5-10)	15	17
13-26992	LOCKWASHER, STARTER SOLENOID SCREW	19	32	16-55422	STUD, CONTROL PANEL TO BOAT (2")	25	40
13-26992	LOCKWASHER, STARTER SOLENOID SCREW	23	32	16-56766	STUD, GIMBAL HOUSING TO HYDRAULIC CONNECTOR (1 3/8")	7	32
13-26993	LOCKWASHER, STARTER SOLENOID TERMINAL (5/16")	19	28	16-57932	STUD, DRIVE SHAFT HOUSING TO FRONT COVER (1 3/4)	11	4
13-26993	LOCKWASHER, STARTER SOLENOID TERMINAL (5/16")	23	28	16-57981	STUD, BEARING RETAINER TO GEAR HOUSING (3")	15	5
13-26996	LOCKWASHER, STARTER SOLENOID TERMINAL (#10)	19	26				

# PARTS INDEX

Part Number	Description	Pg.	Ref. No.	Part Number	Description	Pg.	Ref. No.
16-57982	STUD, GEAR HOUSING TO DRIVE SHAFT HOUSING (1 7/8")	15	2	22-48167	CONNECTOR, HYDRAULIC HOSE TO TRIM INDICATOR SENDER	25	59
16-57983	STUD, DRIVE SHAFT HOUSING TO RETAINER AND REAR COVER (2 7/8)	11	7	22-48169	ELBOW, CONTROL VALVE	19	11
16-57984	STUD, DRIVE SHAFT HOUSING TO RETAINER AND REAR COVER (2 3/8)	11	7	22-48169	ELBOW, HYDRAULIC HOSE TO TRIM INDICATOR SENDER	25	60
16-57985	STUD, DRIVE SHAFT HOUSING TO GEAR HOUSING (2 13/16")	11	2	22-52666	ELBOW, CONTROL VALVE	23	11
16-57986	STUD, GEAR HOUSING TO DRIVE SHAFT HOUSING (2 9/16")	15	3	23-31902	SPACER, TILT STOP SWITCH	5	20
16-57987	STUD, BELL HOUSING TO DRIVE SHAFT HOUSING (4 5/16")	7	4	23-47285	SPACER, TAPERED ROLLER BEARING CUPS	11	15
16-57988	STUD GIMBAL HOUSING TO TRANSOM PLATE (5 3/8")	7	22	23-47305	SPACER, TAPERED ROLLER BEARING	13	41
17-47374	PIN, ANCHOR - TRIM CYLINDER TO GIMBAL RING (13 1/4")	29	8	23-47378	BUSHING, GIMBAL RING (SWIVEL PIN)	5	2
17-47375	PIN, ANCHOR - DRIVE SHAFT HOUSING (11 13/16")	29	2	23-47392	BUSHING, RUBBER - DRIVE SHAFT HOUSING ANCHOR PIN	29	5
17-47380	PIN, SWIVEL - GIMBAL HOUSING TO GIMBAL RING (LOWER)	7	41	23-47392	BUSHING, RUBBER - GIMBAL RING ANCHOR PIN	29	11
17-47621	PIN, SWIVEL RING TO TRANSOM PLATE	3	25	23-47603	SPACER, TAPERED ROLLER BEARING CUPS	17	34
17-48312	PIN, HINGE - GIMBAL RING TO GIMBAL HOUSING	5	5	23-47643	SPACER, STEERING CALBE SCREW	5	16
17-48450	PIN, DOWEL - BELL HOUSING	7	2	23-48011	SLEEVE, TAPERED ROLLER BEARING ADAPTOR	15	14
17-53308	PIN, DOWEL - ADAPTOR SLEEVE	15	15	23-48015	SPACER, PROPELLER SHAFT	15	12
18-47381	COTTER PIN, RETAINING - LOWER SWIVEL PIN	9	42	23-48016	SPACER, SPLIT - PROPELLER SHAFT	15	11
19-47579	PLUG, TRIM TAB HOLE - DRIVE SHAFT HOUSING	11	11	23-48311	BUSHING, GIMBAL RING (HINGE PIN)	5	3
20-48219	CHECK VALVE, OIL RELEASE	7	10	24-48442	SPRING, TENSION - OIL RELEASE CHECK VALVE	7	11
20-48219	CHECK VALVE, OIL RELEASE	13	29	24-48442	SPRING, TENSION - OIL RELEASE CHECK VALVE	13	28
22-31345	FITTING, GREASE - GIMBAL HOUSING	7	28	24-49593	SPRING, DRIVE SHAFT HOUSING ANCHOR PIN	29	4
22-32018	PLUG, OIL FILLER - OIL RESERVIOR COVER	3	14	24-49593	SPRING, GIMBAL RING ANCHOR PIN	29	10
22-38565	ELBOW, GIMBAL HOUSING (OIL HOSE) - 45 DEGREES	7	35	25-20081	"O" RING, BEARING RETAINER (LARGE)	17	38
22-47540	PLUG, PIPE - UPPER SWIVEL SHAFT	5	9	25-20266	"O" RING, FRONT COVER	13	26
22-47841	CONNECTOR, CHECK VALVE GUIDE COVER	7	13	25-21720	"O" RING, HYDRAULIC PUMP TO CONTROL VALVE	19	2
22-47841	CONNECTOR, GIMBAL HOUSING (OIL HOSE)	7	31	25-21720	"O" RING, HYDRAULIC PUMP TO CONTROL VALVE	23	2
22-47841	CONNECTOR, TRANSOM PLATE (OIL HOSE)	3	18	25-21720	"O" RING, HYDRAULIC PUMP TO CONTROL VALVE (SEE REFERENCE #2)	19	10
					"O" RING, HYDRAULIC PUMP TO CONTROL VALVE (SEE REFERENCE #2)	23	10

# PARTS INDEX

Part Number	Description	Pg.	Ref. No.	Part Number	Description	Pg.	Ref. No.
25-35126	"O" RING, OIL FILLER PLUG	3	15	31-47484A1	TAPERED ROLLER BEARING ASSEMBLY	15	16
25-45016	"O" RING, BLEED SCREW	25	58	31-47484A1	TAPERED ROLLER BEARING ASSEMBLY, PROPELLER GEAR	15	9
25-45711	"O" RING, BEARING RETAINER (SMALL)	17	40	31-47669A2	TAPERED ROLLER BEARING ASSEMBLY, COMPLETE (DRIVE SHAFT)	17	33
25-47288	"O" RING, TAPERED ROLLER BEARING ADAPTOR	11	18	31-47946	BEARING, ROLLER - BEARING CARRIER	15	22
25-47291	"O" RING, TAPERED ROLLER BEARING RETAINER	13	46	32-47373	HOSE, HYDRAULIC - CONNECTOR TO TRIM CYLINDER (12 1/2")	29	14
25-47298	"O" RING, BEARING CARRIER	15	20	32-47382	HOSE, HYDRAULIC - CONNECTOR TO HYDRAULIC PUMP (33")	29	15
25-48451	"O" RING, BELL HOUSING	7	3	32-47399	HOSE, HYDRAULIC - CONNECTOR TO REVERSE LOCK VALVE (34")	29	16
25-48452	QUAD RING, OIL RELEASE CHECK VALVE	7	9	32-47439	TUBE, CABLE GUIDE	3	21
25-48452	QUAD RING, OIL RELEASE CHECK VALVE	13	30	32-48327A2	TUBE ASS'Y, PUMP TO REVERSE LOCK VALVE (17 1/2")	29	20
26-31851	OIL SEAL, LOWER GIMBAL HOUSING ROLLER BEARING	7	25	32-48458	HOSE, OIL - BELL HOUSING TO GIMBAL HOUSING (10")	7	17
26-35025	OIL SEAL, UPPER GIMBAL HOUSING ROLLER BEARING	7	27	32-48512	HOSE, OIL - GIMBAL HOUSING TO TRANSOM PLATE (8 1/4")	7	36
26-38105	OIL SEAL, DRIVE SHAFT HOUSING (UNIVERSAL JOINT)	11	3	32-52951A1	TUBING, HYDRAULIC - SENDER TO REVERSE LOCK VALVE (14")	25	61
26-48013	OIL SEAL, BEARING CARRIER	15	23	37-39395	DECAL, SERIAL NUMBER	3	27
26-48443	OIL SEAL, FRONT COVER	13	25	37-39428A1	DECAL SET, DRIVE SHAFT HOUSING	11	10
27-47290	GASKET, TAPERED ROLLER BEARING ADAPTOR	11	21	37-56036A1	DECAL SET, DRIVE SHAFT HOUSING	11	10
27-47317	GASKET, GEAR HOUSING TO DRIVE SHAFT HOUSING	17	42	37-56036A2	DECAL SET, DRIVE SHAFT HUSING	11	10
27-47366	GASKET, GIMBAL HOUSING TO TRANSOM	7	23	38-45372	DECAL, INSTRUCTIONS - HYDRAULIC PUMP	19	9
27-47534	GASKET, OIL RESERVIOR COVER	3	16	38-55823	DECAL, INSTRUCTIONS - HYDRAULIC PUMP	23	9
27-47644	GASKET, HYDRAULIC CONNECTOR	7	39	43-47237A1	GEAR ASSEMBLY, COMPLETE (2:1 GEAR RATIO)	11	12
27-48363	GASKET, CHECK VALVE GUIDE	7	8	43-47309A1	GEAR ASSEMBLY, COMPLETE (1.5:1 GEAR RATIO)	11	12
27-48363	GASKET, CHECK VALVE GUIDE COVER	7	14	43-53572A2	GEAR ASSEMBLY (DRIVE AND PINION)	15	10
27-48407	GASKET, FRONT COVER	13	27	44-47893	PROPELLER SHAFT (1 1/4-7 THREAD)	15	18
28-30281	KEY, LOCATING - BEARING CARRIER	15	24	44-53185A1	PROPELLER SHAFT ASSEMBLY (1 14-12 THREAD)	15	18
31-21638	BEARING, ROLLER - GIMBAL HOUSING (UPPER)	7	26	45-47323	DRIVE SHAFT	17	31
31-30457	BEARING, ROLLER - ROLLER HOUSING (LOWER)	7	24	54-22740	CLIP, HYDRAULIC HOSE TO TRANSOM PLATE (3/8")	29	17
31-34804A3	TAPERED ROLLER BEARING ASSEMBLY, PINION GEAR	13	42				
31-34804A4	TAPERED ROLLER BEARING ASSEMBLY, COMPLETE	11	14				
31-35246	ROLLER BEARING, DRIVE SHAFT	15	4				

# PARTS INDEX

Part Number	Description	Pg.	Ref. No.	Part Number	Description	Pg.	Ref. No.
54-22875	CLAMP, HARNESS TO BOAT	21	56	1636-3153A6	GEAR HOUSING ASSEMBLY, COMPLETE (LEFT HAND ROTATION)	15	-
54-22875	CLAMP, HARNESS TO BOAT (7/16")	21	53			15	-
54-23567	CLAMP, HARNESS TO BOAT (9/16")	21	53	1636-4354A3	GEAR HOUSING ASSEMBLY	15	1
54-24836	CLAMP, HARNESS TO BOAT (1/4")	25	52	1636-4354A4	GEAR HOUSING ASSEMBLY, COMPLETE (RIGHT HAND ROTATION)	15	-
54-26550	CLIP, WIRING HARNESS TO TRANSOM PLATE (5/16)	3	3	1636-4354A5	GEAR HOUSING ASSEMBLY, COMPLETE (LEFT HAND ROTATION)	15	-
54-32523	CLAMP, OIL HOSE TO BELL HOUSING AND GIMBAL HOUSING	7	18				
54-32523	CLAMP, OIL HOSE TO GIMBAL HOUSING AND TRANSOM PLATE	7	37				
54-37282	CLAMP, HYDRAULIC PUMP HARNESS	19	7				
54-37282	CLAMP, HYDRAULIC PUMP HARNESS	23	7				
54-39844A1	CLIP ASSEMBLY, HYDRAULIC HOSE TO TRANSOM PLATE (1/2")	29	17				
54-46770	CLAMP, HARNESS ATTACHING	21	50				
54-46770	CLAMP, HARNESS ATTACHING	25	49				
54-59381	CLAMP, BELLOWS TO GIMBAL HOUSING AND BELL HOUSING	7	20				
392-2529	SPRING SET, BRUSH TENSION	27	17				
392-2618	CAM, VALVE BODY	27	3				
392-2623	WASHER, THRUST - ARMATURE	27	11				
392-2936	VALVE BODY AND GEAR ASSEMBLY	27	2				
392-2937	SEAL, RESERVIOR TO VALVE BODY AND GEAR	27	5				
392-2938	BOLT SET, THRU - PLATE AND FRAME TO RESERVIOR	27	18				
392-2939	RESERVIOR ASSEMBLY	27	6				
392-2940	PLATE ASSEMBLY, COMMUTATOR END	27	15				
392-2941	BRUSH SET, COMMUTATOR END PLATE	27	16				
392-2942	FIELD AND FRAME ASSEMBLY	27	13				
392-2943	ARMATURE, FIELD AND FRAME	27	12				
392-2944	BALL, COMMUTATOR END PLATE	27	14				
1567-3152A1	DRIVE SHAFT HOUSING ASSEMBLY	11	1				
1567-3152A37	DRIVE SHAFT HOUSING ASSEMBLY	11	2				
1636-3153A1	GEAR HOUSING ASSEMBLY	15	1				
1636-3153A5	GEAR HOUSING ASSEMBLY, COMPLETE (RIGHT HAND ROTATION)	15	-				